



**FLORIDA ASSOCIATION OF
COMMUNITY HEALTH CENTERS, INC.**

Directory of Florida's Federally Qualified Health Centers
March 2008

FACHC Contact Information:

**2340 Hansen Lane
Tallahassee, FL 32301
Phone: (850) 942-1822
Fax: (850) 942-9902**

www.fachc.org

Table of Contents

FACHC Membership.....	3
FACHC Staff	5
Introduction.....	6
1) Agape Community Health Center.....	7
2) Bond Community Health Center.....	10
3) Borinquen Health Care Center.....	12
4) Brevard Health Alliance.....	13
5) Broward Community & Family Health Center.....	16
6) C. L. Brumback Community Health Center.....	17
7) Camillus Health Concern.....	19
8) Central Florida Family Health Care.....	21
9) Central Florida Health Care	24
10) Citrus Health Network.....	27
11) Collier Health Services.....	31
12) Community Health Centers, Inc.	35
13) Community Health Centers of Pinellas.....	40
14) Community Health of South Florida.....	42
15) Escambia Community Clinics.....	50
16) Family Health Center of Columbia County.....	51
17) Family Health Center of Southwest Florida	52
18) Family Medical & Dental Centers.....	57
19) Florida Community Health Centers.....	62
20) Health Care for the Homeless.....	66
21) Helen B. Bentley Family Health Center.....	67
22) Jessie Trice Community Health Center.....	69
23) Liberty County Health Department.....	75
24) Manatee County Rural Health Services.....	76
25) Miami Beach Community Health Centers.....	83
26) Nature Coast Community Health Center.....	86
27) North Broward Hospital District.....	87
28) North Florida Medical Centers.....	88
29) Northeast Florida Health Services.....	93
30) PanCare Community Health.....	94
31) Pinellas County Health Care for the Homeless.....	95
32) Premier Community Health Care Group.....	96
33) Primary Care Medical Services of Poinciana.....	100
34) Sarasota County Health Department.....	101
35) St. Joseph's Care of Florida	102
36) The Sulzbacher Center for the Homeless.....	104
37) Suncoast Community Health Center.....	105
38) Tampa Community Health Center.....	107
39) Thomas E. Langley Medical Center.....	110
40) Treasure Coast Community Health Center.....	111
41) Trenton Medical Center.....	112
FACHC ASSOCIATES	
Community Health Centers Alliance	114
Health Choice Network.....	114
Florida Area Health Education Centers	115



FACHC Membership

Members

- Agape Community Health Center
- Bond Community Health Center
- Borinquen Health Care Center
- Brevard Health Alliance
- Broward Community & Family Health Center
- C. L. Brumback Community Health Center
- Camillus Health Concern
- Central Florida Family Health Care
- Central Florida Health Care
- Citrus Health Network
- Collier Health Services
- Community Health Centers
- Community Health of South Florida
- Community Health Centers of Pinellas
- Family Health Center of Columbia County
- Family Health Center of Southwest Florida
- Family Medical & Dental Centers
- Florida Community Health Centers, Inc.
- Health Care for the Homeless
- Helen B. Bentley Family Health Center
- Jessie Trice Community Health Center
- Liberty County Health Department
- Manatee County Rural Health Services
- Miami Beach Community Health Centers
- Nature Coast Community Health Center
- North Florida Medical Centers
- Northeast Florida Medical Centers
- PanCare Community Health
- Pinellas County Human Services Department – Health Care for the Homeless
- Premier Community Health Care Group
- Primary Care Medical Services of Poinciana
- Sarasota County Health Department
- St. Joseph's Care of Florida
- The Sulzbacher Center for the Homeless
- Suncoast Community Health Center
- Tampa Community Health Center
- Thomas E. Langley Medical Center
- Treasure Coast Community Health Center
- Trenton Medical Center



FQHC Networks

- Health Choice Network
- Community Health Centers Alliance

Partners

- Florida Area Health Education Center
 - Florida State University AHEC Program
 - University of Florida AHEC Program
 - University of Miami AHEC Program
 - Nova Southeastern University AHEC Program
 - University of South Florida AHEC Program
 - Big Bend AHEC
 - Central Florida AHEC
 - Everglades AHEC
 - Florida Keys AHEC
 - Gulfcoast North AHEC
 - Gulfcoast South AHEC
 - Miami-Dade AHEC
 - Northeast Florida AHEC
 - Suwannee River AHEC
 - West Florida AHEC



FACHC Staff

Andy Behrman, MBA

President and Chief Executive Officer

Abehrman@fachc.org

Robert J. Reinshuttle, MPA

Chief Operating Officer

Reinshuttle@fachc.org

J. Travis Coker

Director of Special Projects and Legislative Affairs

Tcoker@fachc.org

Erin Sologaistoa, MS

Director of Community Development and S. E. Migrant Health Coordinator

Erin@fachc.org

Miranda Paschal, MEd

Clinical Quality Coordinator

Miranda@fachc.org

Thomas J. Knox, Jr., MPA

Director, Emergency Preparedness and Educational Programs

Tknox@fachc.org

Nancy Caskey

Office Manager

Nancy@fachc.org

Melissa Peters

Administrative Analyst

Melissa@fachc.org

Contact Information:

2340 Hansen Lane

Tallahassee, FL 32301

Phone: (850) 942-1822

Fax: (850) 942-9902

Introduction

In Florida, 40 providers of quality, comprehensive, community-based primary health care serve more than 600,000 patients annually with over 2.5 million medical, dental, and mental health encounters at over 200 health sites across the state.

“Community health center” is a broad term for a diverse range of public and non-profit organizations and programs that focus on improving the health of individual patients and their communities by providing high-quality, affordable primary care and preventive services. Nationwide, they are the health care home for 15 million patients.

Each health center’s staffing models, facilities and services are tailored to meet the unique needs of its patients and communities. Many individuals have difficulty accessing medical care because of where they live, their language and their complex health care needs. Health centers provide culturally appropriate health care that is close to where patients live, at convenient hours, and in often their native language.

Community health centers have professionally trained health care teams. These teams may include board-certified or board-eligible physicians, nurses, nurse practitioners, physician assistants, certified nurse midwives, medical assistants, mental health workers, dentists, and dental hygienists. The clinicians of each team work together to provide a core of primary health services to individuals and families throughout all life stages, from pediatric through geriatric.

Four types of health centers as described below are funded under Section 330 of the Public Health Service Act. These health centers may also be called Federally Qualified Health Centers (FQHCs) and they must meet the following requirements:

- Be located in or serve a Medically Underserved Area/Population (MUA or MUP) as designated by the Health Resources and Services Administration; these are areas where health care is needed but scarce
- Operate under patient-majority board of directors
- Provide comprehensive primary health, oral, and mental health/substance abuse services, as well as supportive services such as translation and transportation services that promote access to health care, to everyone in the community in all stages of the life cycle
- Provide services without regard for patients’ ability to pay or insurance status
- Charge for services on a sliding-fee scale that is based on patients’ family size and income

Since 1981, the role of the Florida Association of Community Health Centers (FACHC) has been to improve access to quality healthcare by bringing together state and federal agencies, selected offices, and other key individuals to impact health care services. In addition, the association is rapidly expanding its ability to serve its members with the development of new programs and services. FACHC will continue to be a leading voice in the state capitol and in Washington as an advocate for Community based health care programs.



Agape Community Health Center

CEO: Belinda Johnson-Cornett

Key Contact: Wally Plosky

Administrative/Main Site: Agape Community Health Center

Address: 1760 West Edgewood Avenue
Jacksonville, FL 32208

Phone: (904) 301-4900

Fax: (904) 630-3316

Hours of Operation:

Monday – Friday: 8:00 a.m. – 5:00 p.m.

Services Provided:

Medical Exams, Pap Smears, Clinical Breast Exams, Sexually Transmitted Diseases Testing and Treatment, Family Planning, Birth Control, Pregnancy Testing, Maternal/Prenatal Care, Well Care, Preventive Care, Immunization, Health Promotion, Chronic Disease Management, Sick Care, On-Site Pharmacy, Services under the Healthy Start Program, Health Education, WIC

Webpage: <http://dchd.net/agape.htm>

Satellite Site: West Jacksonville Family Health Center

Address: 120 King Street
Jacksonville, FL 32204

Phone: (904) 301-4900

Hours of Operation:

Monday – Friday: 8:00 a.m. - 5:00 p.m.

Services Provided:

Medical Exams, Pap Smears, Clinical Breast Exams, Sexually Transmitted Diseases Testing and Treatment, Family Planning, Birth Control, Pregnancy Testing, Maternal/Prenatal Care, Well Care, Preventive Care, Immunization, Health Promotion, Chronic Disease Management, Sick Care, On-Site Pharmacy, Services under the Healthy Start Program, Health Education, WIC

Satellite Site: South Jacksonville Family Health Center

Address: 1736 University Boulevard South
Jacksonville, FL 32216

Phone: (904) 301-4900

Hours of Operation:

Monday – Friday: 8:00 a.m. - 5:00 p.m.

Services Provided:

Medical Exams, Pap Smears, Clinical Breast Exams, Sexually Transmitted Diseases Testing and Treatment, Family Planning, Birth Control, Pregnancy Testing, Maternal/Prenatal Care, Well Care, Preventive Care, Immunization, Health Promotion, Chronic Disease Management, Sick Care, On-Site Pharmacy, Services under the Healthy Start Program, Health Education, WIC

Satellite Site: South Jacksonville Primary Care Center

Address: 4131 University Boulevard, Building 18
Jacksonville, FL 32216

Phone: (904) 253-1220

Hours of Operation:

Monday – Friday: 8:00 a.m. - 5:00 p.m.

Services Provided:

Medical Exams, Pap Smears, Clinical Breast Exams, Sexually Transmitted Diseases Testing and Treatment, Family Planning, Birth Control, Pregnancy Testing, Maternal/Prenatal Care, Well Care, Preventive Care, Immunization, Health Promotion, Chronic Disease Management, Sick Care, On-Site Pharmacy, Services under the Healthy Start Program, Health Education, WIC

Satellite Site: Wesconnett Family Health Center

Address: 5150-9 Timuquana Road
Jacksonville, FL 32210

Phone: (904) 253-1120

Hours of Operation:

Monday – Friday: 8:00 a.m. - 5:00 p.m.

Services Provided:

Medical Exams, Pap Smears, Clinical Breast Exams, Sexually Transmitted Diseases Testing and Treatment, Family Planning, Birth Control, Pregnancy Testing, Maternal/Prenatal Care, Well Care, Preventive Care, Immunization, Health Promotion, Chronic Disease Management, Sick Care, On-Site Pharmacy, Services under the Healthy Start Program, Health Education, WIC



Bond Community Health Center

CEO: J. R. Richards

COO: Sonia Neal

CMO: Temple Robinson, MD

CFO: Mark Northcutt

Administrative/Main Site: Bond Community Health Center

Address: 710 West Orange Avenue
Tallahassee, FL 32310

Phone: (850) 576-4073

Fax: (850) 576-2824

Hours of Operation:

Monday – Wednesday: 8:00 a.m. - 8:00 p.m.

Thursday: 8:00 a.m. - 5:00 p.m.

Friday: 8:00 a.m. - 5:00 p.m.

Saturday: 9:00 a.m. - 2:00 p.m.

Services Provided:

Pediatrics, Adolescent Medicine, Adult Medicine, Diabetes Collaborative, HIV/AIDS Primary Health Care including HIV Case Management, Outreach, Health Education, HIV Counseling and Testing, AIDS Drug Assistance Program (ADAP), Geriatric Care, Midwifery Services, OB/GYN, Prenatal Case Management, Ophthalmology, Nutrition Counseling and WIC Services, Social Services, Physicals, Basic Laboratory Testing, HIV Support Groups, Immunizations, Medical Eligibility Screening, Transportation Services, Referrals, (2007-participating in major cancer research study)

Webpage: <http://www.bondchc.com>

Satellite Site: Bond Community Health Center

Address: 872 West Orange Avenue
Tallahassee, FL 32310

Phone: (850) 414-7848

Hours of Operation:

Monday – Wednesday: 8:00 a.m. - 5:00 p.m.

Thursday: 8:00 a.m. - 8:00 p.m.

Friday: 8:00 a.m. - 5:00 p.m.

Services Provided:

Pediatrics, Adolescent Medicine, Adult Medicine, Diabetes Collaborative, HIV/AIDS Primary Health Care including HIV Case Management, Outreach, Health Education, HIV Counseling and Testing, AIDS Drug Assistance Program (ADAP), Geriatric Care, Midwifery Services, OB/GYN, Prenatal Case Management, Ophthalmology, Nutrition Counseling and WIC Services, Social Services, Physicals, Basic Laboratory Testing, HIV Support Groups, Immunizations, Medical Eligibility Screening, Transportation Services, Referrals



Borinquen Health Care Center, Inc.

CEO: Robert Linder

CMO: Hilton Perez, MD

CFO: vacant

Medical Director: Ernesto A. Sivilla, MD, FACURP

Director of Administration: Paul Velez

Administrative/Main Site: Borinquen Health Care Center, Inc.

Address: 3601 Federal Highway
Miami, FL 33137

Phone: (305) 576-6611

Fax: (305) 576-0008

Hours of Operation:

Monday & Wednesday: 8:00 a.m. - 5:00 p.m.

Tuesday & Thursday: 9:00 a.m. - 7:00 p.m.

Friday: 8:00 a.m. - 4:00 p.m.

Saturday: 8:00 a.m. - 2:00 p.m.

Services Provided:

Internal Medicine Specialty, Pediatric Services, OB/GYN & Women's Care, Podiatry, Dental Services, Radiology, On-Site Pharmacy, Mental Health, HIV/AIDS Services (Special Population), Social Services, Healthy Start Program Services, Health Education, Laboratory, Optical Services

Satellite Site: Mobile Care Unit

Address: 3601 Federal Highway
Miami, FL 33137

Phone: (305) 576-6611

Hours of Operation:

Monday – Friday: 8:00 a.m. - 5:00 p.m.

Services Provided:

HIV Rapid Testing, Women 14-24 Gonorrhea & Chlamydia Testing, Hepatitis Panel Test, Condom Distribution, Adult Medicine Services, Glucose Testing



Brevard**HEALTH**Alliance
INCORPORATED

Brevard Health Alliance

CEO: Lisa Gurri

CFO: Thomas Culbreth

Manager of Clinic Operations: Marsha Vendetti

CMO: Thomas Garvin, MD

Administrative/Main Site: Brevard Health Alliance

Address: 3661 South Babcock Street
Melbourne, FL 32901

Phone: (321) 722-5910

Fax: (321) 733-2073

Hours of Operation:

Monday: 8:30 a.m. – 8:00 p.m.

Tuesday – Friday: 8:30 a.m. – 5:00 p.m.

Website: http://www.health-first.org/health_plans/ancillary.cfm#community

Satellite Site: BHA Melbourne Clinic

Address: 17 Silver Palm Avenue
Melbourne, FL 32901

Phone: (321)

Fax: (321)

Hours of Operation:

Monday – Friday: 8:00 a.m. - 5:00 p.m.

Services Provided:

Primary Health Care

Satellite Site: BHA Cocoa Clinic

Address: 15 Rosa L. Jones Drive
Cocoa, FL 32922

Phone: (321) 639-5177

Fax: (321) 639-4927

Hours of Operation:

Monday – Friday: 8:00 a.m. - 5:00 p.m.

Services Provided:

Primary Health Care

Satellite Site: BHA Melbourne Clinic

Address: 1281 South Hickory Street
Suite A - Medical Arts Building
Melbourne, FL 32901

Phone: (321) 733-2021

Fax: (321) 434-1741

Hours of Operation:

Monday – Friday: 8:30 a.m. - 5:00 p.m.

Services Provided:

Primary Health Care

Satellite Site: BHA Monroe Center

Address: 705 Blake Avenue, Bldg. G
Cocoa, FL 32922

Phone: (321) 633-6391

Fax: (321) 633-6441

Hours of Operation:

Monday – Friday: 8:30 a.m. - 5:00 p.m.

Services Provided:

Primary Health Care

Satellite Site: BHA Palm Bay Clinic

Address: 5270 Babcock Street NE
Palm Bay, FL 32905

Phone: (321) 722-5959

Fax: (321) 722-5960

Hours of Operation:

Monday – Friday: 8:30 a.m. - 5:00 p.m.

Services Provided:

Primary Health Care

Pediatric Care

Satellite Site: BHA Mobile Unit

At selected locations...

Services Provided:

Primary Health Care



Broward Community and Family Health Center

CEO: Rosalyn Frazier

CFO: Robert Agari

CMO: Ronald Stein, MD

Administrative/Main Site: Broward Community and Family Health Center

Address: 2518 North State Road 7
Hollywood, FL 33021

Phone: (954) 967-0028
Fax: (954) 971-9503

Hours of Operation:

Monday, Wed, Thurs, Friday: 8:30 a.m. - 5:00 p.m.
Tuesday: 10:00 a.m. - 7:00 p.m.

Services Provided:

Family Medicine, Pharmacy, Immunizations, Physicals, HIV Testing/Treatment, Well-Child Care/Kid Care, Prescription Assistance, Internal Medicine, Women's Health, Health Education, Laboratory, Specialty Referrals, Translation Services, Cancer Screenings

Satellite Site: Broward Community and Family Health Centers

Address: 168 North Powerline Road
Pompano Beach, FL 33069

Phone: (954) 970-8805

Hours of Operation:

Monday, Wed, Thurs, Friday: 8:30 a.m. - 5:00 p.m.
Tuesday: 10:00 a.m. - 7:00 p.m.

Services Provided:

Family Medicine, Pharmacy, Immunizations, Physicals, HIV Testing/Treatment, Well-Child Care/Kid Care, Prescription Assistance, Internal Medicine, Women's Health, Health Education, Laboratory, Specialty Referrals, Translation Services, Cancer Screenings



C. L. Brumback Community Health Center

CEO: Jacqueline Lobban-Marsan, MPA

CMO: Betty Jean Baker, DO

Administrative/Main Site: C. L. Brumback Community Health Center

Address: 38754 State Road 80
Belle Glade, FL 33430

Phone: (561) 996-1600

Fax: (561) 996-1612

Hours of Operation:

Monday – Friday: 7:00 a.m. - 5:00 p.m.

Services Provided:

Adult and Pediatric Primary Care, Women's Health, Immunizations, Dental, X-Ray, Infectious Disease, Health Education, Laboratory, Pharmacy, HIV Counseling & Testing, Insurance Eligibility Assistance

Webpage: http://www.pbchd.com/centers/center_belle_glade.html

Satellite Site: West Palm Beach Health Center

Address: 1150 45th Street
West Palm Beach, FL 33407

Phone: (561) 514-5300

Hours of Operation:

Monday – Friday: 7:00 a.m. - 5:00 p.m.

Services Provided:

Adult and Pediatric Primary Care, Women's Health, Immunizations, X-Ray, Pediatric Infectious Disease, Health Education, Laboratory, Pharmacy, Insurance Eligibility Assistance

Webpage: http://www.pbchd.com/centers/center_west_palm_beach.html

Satellite Site: Pahokee Community Health Center

Address: 1200 East Main Street
Pahokee, FL 33476

Phone: (561) 924-0184

Hours of Operation:

Monday – Friday: 7:30 a.m. - 5:00 p.m.

Services Provided:

Adult Medical, Pediatric Services, Dental, Laboratory and Women's Health , Immunizations, Health Education, Insurance Eligibility Assistance

Webpage: http://www.pbchd.com/centers_center_pahokee.html

Satellite Site: Delray Community Health Center

Address: 225 S Congress Avenue
Delray Beach, FL 33445

Phone: (561) 274-3100

Hours of Operation:

Monday – Friday: 7:30 a.m. - 5:00 p.m.

Services Provided:

Adult Medical, Pediatric Services, Dental, Laboratory and Women's Health , Immunizations, Health Education, Insurance Eligibility Assistance



Camillus Health Concern

CEO: Paul Ahr, PhD

CFO: Kevin Kearns

CMO: Ross Collazo, DO

Clinical Services Administrator: Hirut Kassaye, MPH

Administrative/Main Site: Camillus Health Concern

Address: 336 NW 5th Street
Miami, FL 33128

Phone: (305) 577-4840
Fax: (305) 373-7431

Hours of Operation:

Monday, Tuesday, Thursday, Friday: 8:30 a.m. - 4:30 p.m.
Wednesday: 12:00 p.m. - 8:00 p.m.

Services Provided:

Adult Primary Health, Pediatric Health, Women's Preventative Health, Medical Outreach Services, HIV/AIDS Services, Oral Health, Podiatry, Behavioral Health, Case Management, Transportation

Webpage: http://www.camillushouse.org/camillus_programs/health_concern

Satellite Site: Salvation Army of Miami

Address: 1907 NW 38th Street
Miami, FL 33142

Phone: (305) 637-6700

Hours of Operation:

Tuesday: 8:30 a.m. - 12:00 p.m.

Services Provided:

Adult Primary Health

Satellite Site: Better Way of Miami

Address: 800 NW 28th Street
Miami, FL 33127

Phone: (305) 634-4797

Hours of Operation:

Monday: 8:30 a.m. - 4:30 p.m.

Friday: 8:30 a.m. - 12:00 p.m.

Services Provided:

Adult Primary Health



Central Florida Family Health Center

CEO: Dennis Cahill

COO: Leigh Lupton

CMO: Leslie Smith, DO

CFO: Juan Castro

Pharmacy Director: Hylan Boxer, RPh.

Nursing Director: Kris Armstrong, RN

Administrative/Main Site: Central Florida Family Health Center

Address: 2400 State Road 415
Sanford, FL 32771

Phone: (407) 322-8645

Fax: (407) 324-7311

Hours of Operation:

Monday, Wednesday: 8:00 a.m. - 7:00 p.m.

Tuesday, Thursday: 8:30 a.m. - 5:30 p.m.

Friday: 8:00 a.m. - 12:00 p.m.

Services Provided:

Primary Care: Health Education, Nutritional Guidance, Disease Prevention, Cancer Screening, Immunizations, Physical Examinations, Hypertension Screening, Diabetes Screening, Tuberculosis Screening, AIDS Screening, Family Planning; Secondary Care: Medical Diagnosis, Treatment and Follow-Up of Acute and Chronic Diseases in the areas of Family Practice, Primary Gynecology, Internal Medicine, and Pediatrics, Patient Referral for Specialty Consultations and Diagnostics, Pharmacy Services

Webpage: <http://www.cffhc.org/>

Satellite Site: Central Florida Family Health Center (Hoffner Office)

Address: 5449 South Semoran Blvd., Suite 14
Orlando, FL 32822

Phone: (407) 207-7756

Fax: (407) 207-7766

Hours of Operation:

Monday, Wednesday: 8:00 a.m. - 8:00 p.m.

Tuesday, Thursday: 8:30 a.m. – 8:00 p.m.

Friday: 8:00 a.m. - 12:00 p.m.

Saturday: 8:00am – 1:00pm

Services Provided:

Primary Care: Health Education, Nutritional Guidance, Disease Prevention, Cancer Screening, Immunizations, Physical Examinations, Hypertension Screening, Diabetes Screening, Tuberculosis Screening, AIDS Screening, Family Planning; Secondary Care: Medical Diagnosis, Treatment and Follow-Up of Acute and Chronic Diseases in the areas of Family Practice, Primary Gynecology, Internal Medicine, and Pediatrics, Patient Referral for Specialty Consultations and Diagnostics, Pharmacy

Satellite Site: Central Florida Family Health Center (Alafaya Office)

Address: 11881-A East Colonial Drive
Orlando, FL 32826

Phone: (407) 275-4048

Fax: (407) 737-2423

Hours of Operation:

Monday, Wednesday: 8:00 a.m. - 7:00 p.m.

Tuesday, Thursday: 8:30 a.m. - 5:30 p.m.

Friday: 8:00 a.m. - 12:00 p.m.

Services Provided:

Primary Care: Health Education, Nutritional Guidance, Disease Prevention, Cancer Screening, Immunizations, Physical Examinations, Hypertension Screening, Diabetes Screening, Tuberculosis Screening, AIDS Screening, Family Planning; Secondary Care: Medical Diagnosis, Treatment and Follow-Up of Acute and Chronic Diseases in the areas of Family Practice, Primary Gynecology, Internal Medicine, and Pediatrics, Patient Referral for Specialty Consultations and Diagnostics, Pharmacy

Satellite Site: Southside Family Health Center

Address: 6101 Lake Ellenor Drive, Suite 100
Orlando, FL 32809

Phone: (407) 956-4660

Fax: (407) 956-4675

Hours of Operation:

Monday, Wednesday: 8:00 a.m. - 7:00 p.m.

Tuesday, Thursday: 8:30 a.m. - 5:30 p.m.

Friday: 8:00 a.m. - 12:00 p.m.

Services Provided:

Primary Care: Health Education, Nutritional Guidance, Disease Prevention, Cancer Screening, Immunizations, Physical Examinations, Hypertension Screening, Diabetes Screening, Tuberculosis Screening, AIDS Screening, Family Planning; Secondary Care: Medical Diagnosis, Treatment and Follow-Up of Acute and Chronic Diseases in the areas of Family Practice, Primary Gynecology, Internal Medicine, and Pediatrics, Patient Referral for Specialty Consultations and Diagnostics, Pharmacy

Satellite Site: Lake Underhill Family Health Center

Address: 5730 Lake Underhill Road
Orlando, FL 32807

Phone: (407) 956-4320

Fax: (407) 956-4337

Hours of Operation:

Monday, Wednesday: 8:00 a.m. - 7:00 p.m.

Tuesday, Thursday: 8:30 a.m. - 5:30 p.m.

Friday: 8:00 a.m. - 12:00 p.m.

Services Provided:

Primary Care: Health Education, Nutritional Guidance, Disease Prevention, Cancer Screening, Immunizations, Physical Examinations, Hypertension Screening, Diabetes Screening, Tuberculosis Screening, AIDS Screening, Family Planning; Secondary Care: Medical Diagnosis, Treatment and Follow-Up of Acute and Chronic Diseases in the areas of Family Practice, Primary Gynecology, Internal Medicine, and Pediatrics, Patient Referral for Specialty Consultations and Diagnostics, Pharmacy



Central Florida Health Care

CEO: Gaye Williams

CMO: Dr. Kyle Morsch (Chief Clinical Officer)

CFO: Bernard Fulse

Pharmacy Director: Jacovy Sumrall RPh.

Administrative/Main Site: Central Florida Health Care, Inc.

Address: 950 County Road 17A W
Avon Park, FL 33825

Phone: (863) 452-3000

Fax: (863) 452-3013

Hours of Operation:

Monday – Thursday: 7:30 a.m - 5:30 p.m.

Friday: 7:30 a.m. - 5:00 p.m.

Saturday: 7:30 a.m. - 12:00 p.m.

Services Provided:

Primary Medical Care, Family Planning, Gynecology, Obstetrics, Internal Medicine, Dental, Diagnostic Lab, Diagnostic X-Ray, Pharmacy, Hearing Screening, Vision Screening, Mental Health Services, HIV Testing, Immunizations

Webpage: <http://www.cfhconline.org>

Satellite Sites: CFHC Wauchula

Address: 204 East Palmetto Street
Wauchula, FL 33837

Phone: (863) 773-2111

Hours of Operation:

Monday – Thursday: 7:30 a.m. - 5:30 p.m.
Friday: 7:30 a.m. - 5:00 p.m.
Saturday: 7:30 a.m. - 12:00 p.m.

Services Provided:

Primary Medical Care, Family Planning, Internal Medicine, Diagnostic Lab, Diagnostic X-Ray, Hearing Screening, Vision Screening, Mental Health Services, HIV Testing, Immunizations

Satellite Site: Just For Her

Address: 417 Carlton Street
Wauchula, FL 33843

Phone: (863) 773-0336

Hours of Operation:

Monday – Thursday: 7:30 a.m. - 5:30 p.m.
Friday: 7:30 a.m. - 5:00 p.m.

Services Provided:

Gynecology, Obstetrics

Satellite Site: CFHC Frostproof

Address: 109 West Wall Street
Frostproof, FL 33843

Phone: (863) 635-4891

Hours of Operation:

Monday – Thursday: 7:30 a.m. - 5:30 p.m.
Friday: 7:30 a.m. - 5:00 p.m.
Saturday: 7:30 a.m. - 12:00 p.m.

Services Provided:

Primary Medical Care, Family Planning, Gynecology, Obstetrics, Internal Medicine, Dental, Diagnostic Lab, Diagnostic X-Ray, Hearing Screening, Vision Screening, Mental Health Services, HIV Testing, Immunizations

Satellite Site: CFHC Dundee

Address: 916 State Road 542
Dundee, FL 33838

Phone: (863) 419-3330

Hours of Operation:

Monday – Thursday: 7:30 a.m. - 5:30 p.m.

Friday: 7:30 a.m. - 5:00 p.m.

Saturday: 7:30 a.m. - 12:00 p.m.

Services Provided:

Primary Medical Care, Family Planning, Gynecology, Obstetrics, Internal Medicine, Diagnostic Lab, Diagnostic X-Ray, Hearing Screening, Vision Screening, Mental Health Services, HIV Testing, Immunizations

Satellite Site: Lakeland OB/GYN

Address: 1729 Lakeland Hills Blvd.
Lakeland, FL 33805

Phone: (863) 686-0082

Hours of Operation:

Monday – Thursday: 7:30 a.m. - 5:30 p.m.

Friday: 7:30 a.m. - 5:00 p.m.

Saturday: 7:30 a.m. - 12:00 p.m.

Services Provided:

Gynecology, Obstetrics

Satellite Site: Lakeland Primary Care

Address: 936 East Parker Street
Lakeland, FL 33801

Phone: (863) 413-8600

Hours of Operation:

Monday – Thursday: 7:30 a.m. - 5:30 p.m.

Friday: 7:30 a.m. - 5:00 p.m.

Saturday: 7:30 a.m. - 12:00 p.m.

Services Provided:

Primary Medical Care, Family Planning, Gynecology, Obstetrics, Internal Medicine, Diagnostic Lab, Diagnostic X-Ray, Hearing Screening, Vision Screening, Mental Health Services, HIV Testing, Immunizations



Citrus Health Network

CEO: Mario Jardon, LCSW

CMO: Dr. Noel de Jesus Fernandez

COO: Maria Alonso, MBA

CFO: Jorge Balcazar

Administrative/Main Site: Citrus Health Network

Address: 4175 West 20th Avenue
Hialeah, FL 33012

Phone: (305) 823-0080

Fax: (305) 825-1645

Hours of Operation:

Monday – Friday: 8:00 a.m. - 6:00 p.m.

Services Provided:

Primary Care Services including Pediatrics, Family, Internal Medicine, Gynecology, and Services to Special Populations including Mentally Ill Persons, Homeless Adults, Persons with AIDS

Webpage: <http://www.citrushealth.org>

Satellite Site: Flamingo Elementary School

Address: 701 East 33rd Street
Hialeah, FL 33012

Phone: (305) 693-4595

Hours of Operation:

Monday – Friday: 8:00 a.m. - 3:00 p.m.

Services Provided:

School based health services

Satellite Site: Hialeah Gardens Elementary School

Address: 9702 NW 130th Street
Hialeah, FL 33013

Phone: (305) 823-1958

Hours of Operation:
Monday – Friday: 8:00 a.m. - 3:00 p.m.

Services Provided:
School based health services

Satellite Site: Carol City Elementary School

Address: 4375 NW 173rd Drive
Hialeah Gardens, FL 33018

Phone: (305) 621-0509 ext.132

Hours of Operation:
Monday – Friday: 8:00 a.m. - 3:00 p.m.

Services Provided:
School based health services

Satellite Site: James H. Bright Elementary School

Address: 72530 West 10th Avenue
Hialeah, FL 33010

Phone: (305) 885-1683 ext. 144

Hours of Operation:
Monday – Friday: 8:00 a.m. - 3:00 p.m.

Services Provided:
School based health services

Satellite Site: Mae M. Walters Elementary School

Address: 650 West 33rd Street
Hialeah, FL 33012

Phone: (305) 826-3466

Hours of Operation:
Monday – Friday: 8:00 a.m. - 3:00 p.m.

Services Provided:
School based health services

Satellite Site: Carol City Middle School

Address: 3737 NW 188th Street
Hialeah, FL 33055

Phone: (305) 628-7996

Hours of Operation:
Monday – Friday: 8:00 a.m. - 3:00 p.m.

Services Provided:
School based health services

Satellite Site: Henry H. Filer Middle School

Address: 531 West 29th Street
Hialeah, FL 33012

Phone: (305) 828-9532

Hours of Operation:
Monday – Friday: 8:00 a.m. - 3:00 p.m.

Services Provided:
School based health services

Satellite Site: Miami Lakes Middle School

Address: 6425 Miami Lakeway North
Miami Lakes, FL 33014

Phone: (305) 828-7911

Hours of Operation:

Monday – Friday: 8:00 a.m. - 3:00 p.m.

Services Provided:

School based health services

Satellite Site: Barbara Goleman Senior High School

Address: 14100 NW 89th Avenue
Miami Lakes, FL 33018

Phone: (305) 362-0676 ext. 2099

Hours of Operation:

Monday – Friday: 8:00 a.m. - 3:00 p.m.

Services Provided:

School based health services

Satellite Site: Hialeah Senior High School

Address: 251 West 47th Street
Hialeah, FL 33013

Phone: (305) 828-7033

Hours of Operation:

Monday – Friday: 8:00 a.m. - 3:00 p.m.

Services Provided:

School based health services



Collier Health Services

CEO: Richard Akin

COO: Steven D. Weinman

CMO: Jerry Williamson, MD

CFO: Sandy Steele

Administrative/Main Site: Collier Health Services

Address: 1454 Madison Avenue
Immokalee, FL 34142

Phone: (239) 658-3025
Fax: (239) 658-3050

Hours of Operation:

Monday & Wednesday: 8:30 a.m. - 6:00 p.m.
Tuesday, Thursday, Fri, Sat: 8:30 a.m. - 4:30 p.m.

Services Provided:

Family Practice, Pediatrics, Dental, Women's Health (Obstetrics and Gynecology), Internal Medicine

Webpage: <http://www.collier.org>

Satellite Site: Golden Gate Dental

Address: 5038 Coronado Parkway
Naples, FL 34113

Phone: (239) 348-8040

Hours of Operation:

Monday – Friday: 8:00 a.m. - 5:00 p.m.

Services Provided: Dental

Satellite Site: Central Naples Pediatrics

Address: 3425 10th Street North
Naples, FL 34103

Phone: (239) 262-3669

Hours of Operation:
Monday – Friday: 8:00 a.m. - 5:00 p.m.

Services Provided:
Pediatrics

Satellite Site: Golden Gate Pediatrics

Address: 5034 Coronado Parkway
Naples, FL 34116

Phone: (239) 455-5105

Hours of Operation:
Monday – Friday: 8:00 a.m. - 5:00 p.m.
(Open Saturdays when Physician is on call)

Services Provided:
Pediatrics

Satellite Site: Marco Island Pediatrics

Address: 40 South Healthwood Drive
Marco Island, FL 34145

Phone: (239) 394-0693

Hours of Operation:
Monday – Friday: 8:30 a.m. - 5:00 p.m.

Services Provided:
Pediatrics

Satellite Site: Immokalee Family Care Center

Address: 1502 Lake Trafford Drive
Immokalee, FL 34142

Phone: (239) 657-6363

Hours of Operation:

Monday – Friday: 8:00 a.m. - 4:00 p.m.

Services Provided:

Family Practice

Satellite Site: East Naples Medical Center

Address: 1755 Heritage Trail Unit B
Naples, FL 34112

Phone: (239) 775-2220

Hours of Operation:

Monday – Friday: 8:00 a.m. - 5:00 p.m.
(Open Saturdays when Physician is on call)

Services Provided:

Pediatrics

Satellite Site: Creekside Pediatrics

Address: 1284 Creekside Street, Suite 107-108
Naples, FL 34108

Phone: (239) 591-1755

Hours of Operation:

Monday – Friday: 8:00 a.m. - 5:00 p.m.
(Open Saturdays when Physician is on call)

Services Provided:

Pediatrics

Satellite Site: Horizon Primary Care

Address: 1755 Heritage Trail Unit A
Naples, FL 34112

Phone: (239) 353-4101

Hours of Operation:

Monday & Wednesday: 8:00 a.m. - 7:00 p.m.
Tuesday, Thursday, Friday: 8:00 a.m. - 5:00 p.m.
Open every other Saturday: 8:00 a.m. - 12:00 p.m.

Services Provided:

Family Practice

Satellite Site: Marion E. Feather Medical Center

Address: 1454 Madison Avenue
Immokalee, FL 34142

Phone: (239) 658-3000

Hours of Operation:

Monday & Wednesday: 8:30 a.m. - 6:00 p.m.
Tuesday, Thurs, Friday, Sat: 8:30 a.m. - 4:30 p.m.

Services Provided:

Family Practice, Pediatrics, Dental, Internal Medicine, Women's Health (Obstetrics and Gynecology)

Satellite Site: North Naples Center for Women's Health

Address: 1284 Creekside Street, Suite 101
Naples, FL 34108

Phone: (239) 566-1991

Hours of Operation:

Monday – Friday: 8:00 a.m. - 5:00 p.m.

Services Provided:

Obstetrics, Gynecology

Satellite Site: Ronald McDonald Mobile Care

Address: 1454 Madison Avenue
Immokalee, FL 34142



Community Health Centers, Inc.

CEO: Mark Williams

CMO: Michael Ham-Ying, MD

CFO: Tanya Black, BS

Pharmacy Director: Paul Kujda, RPh.

Administrative/Main Site: Community Health Centers

Address: 110 South Woodland Street
Apopka, FL 32704

Phone: (407) 905-8827

Fax: (407) 905-8976

Hours of Operation:

Monday – Friday: 8:00 a.m. - 5:00 p.m.

Services Provided:

Family Care, Women’s Medicine, Prenatal and Childbirth Care, OB/GYN, Men’s Medicine, Employee Health and Worker’s Compensation, Routine Tests and Screenings, Laboratory, X-Ray, EKGs, Pharmacy, Pediatric Services, Senior Services, Community Education, Dental

Satellite Site: South Lake Family Health Center

Address: 1296 West Broad Street
P.O. Box 126
Groveland, FL 34736

Phone: (407) 656-5141

Hours of Operation:

(FAMILY & DENTAL)

Monday, Tuesday, Wed: 8:00 a.m. - 5:00 p.m.

Thursday: 8:00 a.m. - 8:00 p.m.

Friday: 8:00 a.m. - 1:00 p.m.

(DENTAL) Friday: 8:00 a.m. - 12:00 p.m.

Services Provided:

Family Practice, Family Planning, Dental, Referral Lab, On-site Lab, On-site Pharmacy

Satellite Site: Leesburg Community Health Center

Address: 225 North First Street
Leesburg, FL 34748

Phone: (352) 360-0490

Hours of Operation:

Monday, Tuesday, Wed: 8:00 a.m. - 5:00 p.m.
Thursday: 8:00 a.m. - 8:00 p.m.
Friday: 8:00 a.m. - 1:00 p.m.

Services Provided:

Internal Medicine, Pediatrics, OB/GYN, Family Planning, Referral Lab, On-site Lab

Satellite Site: Eatonville Family Health Center

Address: 434 West Kennedy Blvd., Suite D
Orlando, FL 32810

Phone: (407) 645-3989

Hours of Operation:

Monday & Wed: 8:00 a.m. - 5:00 p.m.
Tuesday & Thursday: 8:00 a.m. - 6:00 p.m.
Friday: 8:00 a.m. - 3:00 p.m.

Services Provided:

Family Practice, Family Planning, Dental, Referral Lab, On-site Lab, On-site Pharmacy

Satellite Site: Eatonville Dental

Address: 434 West Kennedy Blvd., Suite E
Orlando, FL 32810

Phone: (407) 645-3959

Hours of Operation:

Monday, Tuesday, Wed: 8:00 a.m. - 5:00 p.m.
Thursday: 8:00 a.m. - 3:00p.m.
Friday: Closed

Services Provided:

Dental, Referral Lab, X-Ray, On-site Pharmacy

Satellite Site: Apopka Dental

Address: 209 East Seventh Street
Apopka, FL 32703

Phone: (407) 886-9569

Hours of Operation:

Monday: 7:00 a.m. - 7:00 p.m.
Tuesday, Wed, Thur 7:00 a.m. - 5:00 p.m.
Friday: 7:00 a.m. - 12:00 p.m.

Services Provided:

Dental, Referral Lab, On-site Pharmacy, X-Ray

Satellite Site: Apopka Family Health Center

Address: 225 East Seventh Street
Apopka, FL 32703

Phone: (407) 886-6201

Hours of Operation:

Monday & Wednesday: 8:00 a.m. - 5:00 p.m.
Tuesday & Thursday: 8:00 a.m. - 8:00 p.m.
Friday: 8:00 a.m. - 12:00 p.m.

Services Provided:

Family Practice, Internal Medicine, OB/GYN, Family Planning, Referral Lab, On-site Lab, On-site Pharmacy, X-Ray

Satellite Site: Apopka Children's Health Center

Address: 618 Forest Avenue
Apopka, FL 32703

Phone: (407) 886-6201

Hours of Operation:

Monday, Wed, Friday: 8:00 a.m. - 5:00 p.m.
Tuesday & Thursday: 8:00 a.m. - 7:00 p.m.
Saturday: 8:00 a.m. - 12:00 p.m.

Services Provided:

Pediatrics, Family Planning, Referral Lab, On-site Lab, On-site Pharmacy

Satellite Site: Lake Ellenor Dental

Address: 6101 Lake Elinor Drive, Suite 106
Orlando, FL 32809

Phone: (407) 956-4660

Hours of Operation:

Monday & Wednesday: 8:00 a.m. - 5:00 p.m.
Tuesday & Thursday: 8:00 a.m. - 6:00 p.m.
Friday: 8:00 a.m. - 12:00 p.m.

Services Provided:

Pediatric Dental Services (Monday - Thursday), Adult Emergency Care (Friday ONLY)

Satellite Site: Pine Hills Family Center/ Pine Hills Dental

Address: 1800 Mercy Drive, 2nd Floor 407
Orlando, FL 32808

Phone: (407) 209-3202

Hours of Operation:

Monday & Wednesday: 8:00 a.m. - 5:00 p.m.
Tuesday & Thursday: 8:00 a.m. - 6:00 p.m.
Friday: 8:00 a.m. - 3:00 p.m.

Services Provided:

Family Practice, Pediatrics, OB/GYN, Family Planning, Referral Lab, On-site Lab, On-site Pharmacy, Dental

Satellite Site: Winter Garden Family Health Center/ Dental

Address: 1210 East Plant Street
Winter Garden, FL 34787

Phone: (407) 877-4300

Hours of Operation:
(FAMILY & DENTAL)

Monday: 8:00 a.m. - 8:00 p.m.
(DENTAL) Monday: 8:00 a.m. - 7:00 p.m.
Tuesday, Wed, Thurs: 8:00 a.m. - 5:00 p.m.
Friday: 8:00 a.m. - 1:00 p.m.
(DENTAL) Friday: 8:00 a.m. - 12:00 p.m.

(PEDIATRICS)

Monday & Wednesday: 8:00 a.m. - 5:00 p.m.
Tuesday & Thursday: 8:00 a.m. - 6:00 p.m.
Friday: 8:00 a.m. - 3:00 p.m.
Saturday: 8:00 a.m. - 12:00 p.m.

Services Provided:

Internal Medicine, Pediatrics, OB/GYN, Family Planning, Dental, Referral Lab, On-site Lab, On-site Pharmacy, X-Ray

Satellite Site: Zellwood Family Health Center

Address: 3688 Day Care Center Road
Zellwood, FL 32798

Phone: (352) 735-2255

Hours of Operation:

Monday & Wednesday: 8:00 a.m. - 5:00 p.m.
Friday: 8:00 a.m. - 12:00 p.m.

Services Provided:

Family Care, Women's Medicine, Prenatal and Childbirth Care, OB/GYN, Men's Medicine, Employee Health and Worker's Compensation, Routine Tests and Screenings, Laboratory, X-Ray, EKGs, Pediatric Services, Senior Services, Community Education, Dental



Community Health Centers of Pinellas

CEO: Pat Mabe

CMO: Julie Cheek, MD

Finance Director: Daniel Kennedy

Pharmacy Director: Arthur Jackson

Key Contact: Joseph A. Santini

Administrative/Main Site: CHCs of Pinellas/ Johnnie Ruth Clarke Health Center

Address: 1344 22nd Street South
St. Petersburg, FL 33712

Phone: (727) 824-8100

Fax: (727) 895-3724

Hours of Operation:

Monday, Wednesday: 8:00 a.m. - 8:00 p.m.

Tuesday, Thursday, Friday 8:00 a.m. – 5:00 p.m.

Dental:

Tuesday, Thursday 7:30 a.m. – 4:00 p.m.

Services Provided:

Family Practice, Pediatrics, Midwifery, OB/GYN, X-Ray, Ultrasound, Pharmacy (All Sites), Prescription Assistance Program (All Sites), Registered Dietician

Satellite Site: Community Health Centers of Pinellas Park

Address: 6237 66th Street
Pinellas Park, FL 33781

Phone: (727) 544-2284

Hours of Operation:

Monday: 8:00 a.m. - 8:00 p.m.

Tuesday – Friday: 8:00 a.m. - 5:00 p.m.

Saturday: (Pediatrics) 8:00 a.m. - 12:00 p.m.

(Family Practitioner 3x/month) 8:00 a.m. - 2:00 p.m.

Services Provided:

Pediatrics, OB/GYN, Family Practice, Midwifery, Colonoscopy, Ultrasound, Registered Dietician

Satellite Sites: Community Health Centers at Largo

Address: 12420 130th Avenue North
Largo, FL 33774

Phone: (727) 587-7729

Hours of Operation:

Monday, Tuesday, Friday: 8:00 a.m. - 5:00 p.m.
Wednesday: 8:00 a.m. – 12:00 p.m.
Thursday: 8:00 a.m. – 8:00 p.m.

Services Provided:

Family Practice

Satellite Sites: Community Health Centers at Clearwater

Address: 1020 Lakeview Road
Clearwater, FL 33756

Phone: (727) 461-1439

Hours of Operation:

Monday & Wednesday: 8:00 a.m. - 8:00 p.m.
Tuesday, Thursday, Friday: 8:00 a.m. - 5:00 p.m.

Services Provided:

Family Practice, Pediatrics, Sports Medicine, Gynecological/ Women Services, Registered Dietician

Satellite Site: Community Health Centers at Tarpon Springs

Address: 301 South Disson Avenue
Tarpon Springs, FL 34689

Phone: (727) 944-3828

Hours of Operation:

Monday – Friday: 8:00 a.m. - 5:00 p.m.

Services Provided:

Family Practice, Pediatrics



Community Health of South Florida

CEO: Brodes Hartley

CMO: St. Anthony Amofah, MD, MBA, CHCQM

CFO: Sean St. Louis

Key Contact: Romanita Ford, BS

Administrative/Main Site: Community Health of South Dade (Doris Ison)

Address: 10300 SW 216th Street
Miami, FL 33190

Phone: (305) 253-5100

Fax: (305) 254-2011

Hours of Operation:

Monday – Friday: 8:30 a.m. - 5:00 p.m.

Services Provided:

Family Health, Pediatric, Dental, Ob/GYN, Pharmacy, Optometry, Radiology, Laboratory, Social Services, Case Management, Urgent Care, Deliveries at Local Hospitals, Ambulatory Walk-In Services, School Based Health Care, Temporary Assistance to the Needy - TANF, Migrant Health Care, Medication Delivery, Health Start, WIC Services on Premises, Crisis Intervention, Detox, Outpatient Counseling, Medication Management, Substance Abuse, Day Treatment, HIV/AIDS Outreach Services, Family and Children

Network webpage: <http://www.hcnetwork.org/centers/chi.html>

Satellite Site: Martin Luther King Jr. – Clinicia Campasina

Address: 810 West Mowry Street
Homestead, FL 33030

Phone: (305) 248-4334

Hours of Operation:

Monday – Friday: 8:30 a.m. – 5:00 p.m.
(AWIS) Monday – Friday: 12:30 a.m. - 8:00 p.m.

Services Provided:

Family Health, Pediatric, Dental, Ob/GYN, Pharmacy, Radiology, Laboratory, Social Services, Case Management, Deliveries at Local Hospitals, Ambulatory Walk-In Services, Migrant Health Care, Medication Delivery, Health Start, WIC Services on Premises, Outpatient Counseling, Medication Management, Substance Abuse, Day Treatment, HIV/AIDS Outreach Services, Family and Children

Satellite Site: Everglades Health Center

Address: 19300 SW 376th Street
Florida City, FL 33034

Phone: (305) 246-4607

Hours of Operation:

Tuesday, Wed, Thurs: 10:30 a.m. - 7:00 p.m.
Friday & Saturday: 8:30 a.m. - 5:00 p.m.

Services Provided:

Family Health, Pediatric, Dental, Ob/GYN, Laboratory, Social Services, Case Management, Deliveries at Local Hospitals, Migrant Health Care, Medication Delivery, Health Start, WIC Services on Premises, HIV/AIDS Outreach Services, Family and Children

Satellite Site: South Dade Health Center

Address: 13600 SW 312th Street
Homestead, FL 33033

Phone: (305) 242-6069

Hours of Operation:

Tuesday, Wed, Thurs: 10:30 a.m. - 7:00 p.m.
Friday & Saturday: 8:30 a.m. - 5:00 p.m.

Services Provided:

Family Health, Pediatric, Dental, Ob/GYN, Laboratory, Social Services, Case Management, Deliveries at Local Hospitals, Migrant Health Care, Medication Delivery, Health Start, Outpatient Counseling, Medication Management, HIV/AIDS Outreach Services, Family and Children

Satellite Site: West Perrine Health Center

Address: 18255 Homestead Avenue
Perrine, FL 33157

Phone: (305) 234-7676

Hours of Operation:

Monday & Wednesday: 10:30 a.m. - 7:00 p.m.

Tuesday, Thursday, Friday : 8:30 a.m. - 5:00 p.m.

Services Provided:

Family Health, Pediatric, Dental, Ob/GYN, Laboratory, Social Services, Case Management, Deliveries at Local Hospitals, School Based Health Care, Temporary Assistance to the Needy - TANF, Migrant Health Care, Medication Delivery, Health Start, WIC Services on Premises, Outpatient Counseling, Medication Management, Substance Abuse, HIV/AIDS Outreach Services, Family and Children

Satellite Site: Naranja Health Center

Address: 13805 SW 264th Street
Naranja, FL 33032

Phone: (305) 258-6813

Hours of Operation:

Tuesday & Thursday: 8:30 a.m. - 7:00 p.m.

Wednesday & Friday: 8:30 a.m. - 5:00 p.m.

Saturday: 8:30 a.m. - 12:30 p.m.

(DENTAL HOURS)

Monday & Wednesday: 10:30 a.m. - 7:00 p.m.

Tuesday, Thursday, Friday: 8:30 a.m. - 5:00 p.m.

Services Provided:

Family Health, Pediatric, Dental, Ob/GYN, Radiology, Laboratory, Social Services, Case Management, Urgent Care, Deliveries at Local Hospitals, Ambulatory Walk-In Services, School Based Health Care, Temporary Assistance to the Needy - TANF, Migrant Health Care, Medication Delivery, Health Start, WIC Services on Premises, Crisis Intervention, Detox, Outpatient Counseling, Medication Management, Substance Abuse, Day Treatment, HIV/AIDS Outreach Services, Family and Children

Satellite Site: Homestead Senior High

Address: 2351 SE 12th Avenue
Homestead, FL 33035

Phone: (305) 242-2244

Hours of Operation:

Monday – Friday: 8:30 a.m. - 5:00 p.m.

Services Provided:

School-based health

Satellite Site: Laura Saunders Elementary

Address: 505 SW 8th Street
Homestead, FL 33030

Phone: (305) 242-0973

Hours of Operation:

Monday – Friday: 8:30 a.m. - 5:00 p.m.

Services Provided:

School-based health

Satellite Site: R. R. Morton Elementary

Address: 18050 Homestead Avenue
Perrine, FL 33157

Phone: (305) 238-9520

Hours of Operation:

Monday – Friday: 8:30 a.m. - 5:00 p.m.

Services Provided:

School-based health

Satellite Site: COPE South

Address: 10225 SW 147th Street
Miami, FL 33176

Phone: (305) 253-8073

Hours of Operation:

Monday – Friday: 8:30 a.m. - 5:00 p.m.

Services Provided:

School-based health and pediatrics services

Satellite Site: Campbell Drive Elementary

Address: 15790 SW 307th Street
Leisure City, FL 33033

Phone: (305) 245-0270

Hours of Operation:

Monday – Friday: 8:30 a.m. - 5:00 p.m.

Services Provided:

School-based health

Satellite Site: Braddock Senior High School

Address: 3601 SW 147th Avenue
Miami, FL 33185

Phone: (305) 225-9729

Services Provided:

School-based health

Satellite Site: Jane Roberts Elementary

Address: 14850 SW Cottonwood Circle
Miami, FL 33185

Phone: (305) 220-8254

Services Provided:

School-based health

Satellite Site: West Miami Middle

Address: 7525 SW 24th Street
Miami, FL 33155

Phone: (305) 261-8383

Services Provided:
School-based health

Satellite Site: Colonial Drive Elementary

Address: 10755 SW 160th Street
Miami, FL 33157

Phone: (305) 238-2392

Services Provided:
School-based health

Satellite Site: H. A. Ammons Middle

Address: 17990 SW 142nd Avenue
Miami, FL 33177

Phone: (305) 971-0158

Services Provided:
School-based health

Satellite Site: W. A. Chapman Elementary

Address: 27190 SW 140th Street
Miami, FL 33032

Phone: (305) 245-1055

Services Provided:
School-based health

Satellite Site: John A. Ferguson Senior High School

Address: 15900 SW 56th Street
Miami, FL 33185

Phone: (305) 408-2700

Services Provided:
School-based health

Satellite Site: Bowman Foster Ashe Elementary

Address: 6601 SW 152nd Avenue
Miami, FL 33193

Phone: (305) 368-6667

Services Provided:
School-based health

Satellite Site: Campbell Drive Middle School

Address: 900 NE 23rd Avenue
Homestead, FL 33033

Phone: (305) 248-7911

Services Provided:
School-based health

Satellite Site: South Dade Senior High School

Address: 28401 SW 167th Avenue
Miami, FL 33030

Phone: (305) 247-4244

Services Provided:
School-based health

Satellite Site: West Homestead Elementary

Address: 1550 SW 6th Street
Homestead, FL 33030

Phone: (305) 248-0812

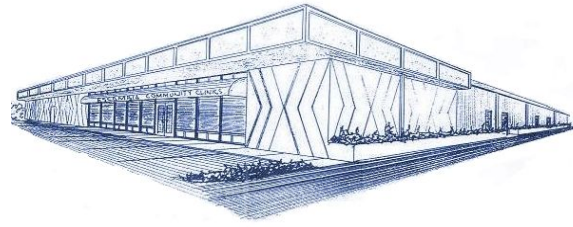
Services Provided:
School-based health

Satellite Site: Martin Luther King Jr. Annex

Address: 820 SW 1st Street
Homestead, FL 33030

Services Provided:
School-based health

Escambia Community Clinics, Inc.
Pensacola, Florida



Escambia Community Clinics, Inc.

CEO: Don Turner

CMO: George A. W. Smith, M.D., F.A.A.F.P.

CFO: Sheila Brown

COO: Colleen Betz

Administration/Main Site: Escambia Community Clinics, Inc.

Address: 2200 North Palafox Street
Pensacola, FL 32501

Phone: (850) 436-4630

Fax: (850) 436-2095

Hours of Operation:

Appointment Clinic:

Monday - Thursday: 8:00 a.m. - 4:30 p.m.

Friday: 8:00 a.m. - 12:00 p.m.

Urgent Care:

Monday - Friday: 8:00 a.m. - 8:00 p.m.

Saturday - Sunday: 8:00 a.m. - 6:00 p.m.

Services Provided:

Pediatrics, Adolescent Medicine, Adult Medicine, Geriatric Care, Social Services, Case Management, Health Education, Laboratory Testing, Basic Xray, Dental Referrals, Specialty Referrals, Health Physicals and Screenings

Webpage: <http://www.ecc-clinic.org>



Family Health Center of Columbia County

CEO: John T. Myles

CMO: Layanya Gopalakrishnan, MD

CFO: Joyce Cook

Administrative/Main Site: Family Health Centers of Columbia County

Location: U.S. Highway 441 North on Albritton Lane

Mail Address: P.O. Box 249
Lake City, FL 32056

Phone: (386) 755-5685

Fax: (386) 752-9143

Hours of Operation:

Monday – Friday: 8:00 a.m. - 5:00 p.m.

Services Provided:

Comprehensive Primary Care



Family Health Centers of Southwest Florida

CEO: Lalai Hamric

CFO: Kevin Kearns

CMO: Jorge Quinonez, M.D.

Administrative/Main Site: Family Health Centers of Southwest Florida, Inc.

Web Site: www.fhcswf.org

Address: 2256 Heitman Street
Ft. Myers, FL 33902

Phone: (239) 278-3600

Fax: (239) 278-3203

Hours of Operation:

Monday – Friday: 8:00 a.m. - 5:00 p.m.

Services Provided:

Family Practice, Pediatrics, Dental, Women's Health

Satellite Site: Port Charlotte Medical Office

Address: 4120 Tamiami Trail, Suite E
Port Charlotte, FL 33952

Phone: (866) 355-2348

Hours of Operation:

Monday – Friday: 8:00 a.m. - 5:00 p.m.

Services Provided:

Family Practice, Dental

Satellite Sites: LaBelle Dental/Medical/Pediatrics Office

Address: 930 South Main Street
LaBelle, FL 33935

Phone: (888) 501-7727

Hours of Operation:
Monday – Friday: 8:00 a.m. - 5:00 p.m.

Services Provided:
Pediatrics, Family Practice, Dental

Satellite Sites: Bonita Springs Medical Office

Address: 28331 South Tamiami Trail, Unit B-4
Bonita Springs, FL 34134

Phone: (239) 332-0417 ext. 7321

Hours of Operation:
Monday – Friday: 8:00 a.m. - 5:00 p.m.

Services Provided:
Pediatrics, Family Practice

Satellite Sites: Bonita Springs Dental Office

Address: 28321 South Tamiami Trail, Unit A-2
Bonita Springs, FL 34134

Phone: (239) 344-2324

Hours of Operation:
Monday – Friday: 8:00 a.m. - 5:00 p.m.

Services Provided:
Dental

Satellite Site: Downtown Ft. Myers Center

Address: 2232 Grand Avenue
Ft. Myers, FL 33901

Phone: (239) 332-0417

Hours of Operation:

Monday – Friday: 8:00 a.m. - 5:00 p.m.

Services Provided:

Pediatrics, Women's Health, Dental

Satellite Site: Pine Island Medical and Dental Office

Address: 8359 Stringfellow Road
St. James City, FL 33956

Phone: (239) 344-2393 (Medical) (239) 283-0308 (Dental)

Hours of Operation:

Monday – Friday: 8:00 a.m. - 5:00 p.m.

Services Provided:

Family Practice, Dental

Satellite Site: Lehigh Acres Medical Office

Address: 391 Lee Blvd., Suite 200
Lehigh Acres, FL 33936

Phone: (239) 344-2305

Hours of Operation:

Monday – Friday: 8:00 a.m. - 5:00 p.m.

Services Provided:

Pediatrics, Family Practice

Satellite Sites: East Ft. Myers Medical Office

Address: 4040 Palm Beach Blvd., Suite A
Ft. Myers, FL 33916

Phone: (239) 344-2304

Hours of Operation:
Monday – Friday: 8:00 a.m. - 5:00 p.m.

Services Provided:
Family Medicine

Satellite Sites: Cape Coral Medical Office

Address: 305 SW 2nd Terrace
Cape Coral, FL 33991

Phone: (239) 344-2320

Hours of Operation:
Monday – Friday: 8:00 a.m. - 5:00 p.m.

Services Provided:
Family Medicine

Satellite Site: Broadway Dental Office

Address: 3600-A Broadway
Ft. Myers, FL 33901

Phone: (239) 344-2325

Hours of Operation:
Monday – Friday: 8:00 a.m. - 5:00 p.m.

Services Provided:
Dental

Satellite Site: Broadway Medical Office

Address: 3594 Broadway, Unit F
Ft. Myers, FL 33901

Phone: (239) 344-2330

Hours of Operation:
Monday – Friday: 8:00 a.m. - 5:00 p.m.

Services Provided:
Adult Medicine

Satellite Site: Salvation Army/ Health Care for the Homeless

Address: 2400 Edison Avenue
Ft. Myers, FL 33901

Phone: (239) 334-2510

Hours of Operation:
Monday – Friday: 8:00 a.m. - 5:00 p.m.

Services Provided:
Adult Medicine

Satellite Site: South Ft. Myers Pediatrics and Women's Health

Address: 9800 South Health Park Drive, Suite 110
Ft. Myers, FL 33908

Phone: (239) 344-2307

Hours of Operation:
Monday – Friday: 8:00 a.m. - 5:00 p.m.

Services Provided:
Pediatrics, Women's Health



Family Medical & Dental Centers

CEO: DeWayne Yates

CFO: Jim Reid, CPA

COO: Debbie Wood, BSN, MBA, HCRM

Pharmacy Director: Larry Pederson, RPh, CPh

Dental Director: Alfredo Pairot, DDS

Administrative/Main Site: Palatka Family Medical Center

Address: 1302 River Street
Palatka, FL 32177

Admin Phone: (386) 328-0108

Admin Fax: (386) 325-1086

Medical Phone: (386) 328-8371

Medical Fax: (386) 328-1519

Hours of Operation:

Monday – Friday: 8:00 a.m. - 5:00 p.m.

Services Provided:

Medical Diagnosis, Treatment of Illnesses, Immunizations, Physical Examinations, Screenings for Asthma, Hypertension, Diabetes, Tuberculosis, HIV and other Sexually Transmitted Diseases, Nutritional Guidance, Health Education, Laboratory Testing, Pharmacy, Family Planning and Birth Control Counseling, Gynecological Services, On-Site X-Ray, Mental Health Counseling, Hospital Coverage, 24-Hour Physician Coverage

Satellite Site: Hawthorne Family Medical Center

Address: 22018 SE 71st Avenue
Hawthorne, FL 32640

Phone: (352) 481-2700

Fax: (352) 481-2392

Hours of Operation:

Monday – Friday: 8:00 a.m. - 5:00 p.m.

Services Provided:

Medical Diagnosis, Treatment of Illnesses, Immunizations, Physical Examinations, Screenings for Asthma, Hypertension, Diabetes, Tuberculosis, HIV and other Sexually Transmitted Diseases, Nutritional Guidance, Health Education, Laboratory Testing, Family Planning and Birth Control Counseling, Gynecological Services, Hospital Coverage, 24-Hour Physician Coverage

Satellite Site: Keystone Heights Family Medical Center

Address: 100 Commercial Drive
P.O. Box 2010
Keystone Heights, FL 32656

Phone: (352) 473-6595

Fax: (352) 473-6597

Hours of Operation:

Monday, Wed, Thurs, Friday: 8:00 a.m. - 5:00 p.m.

Tuesday: 8:00 a.m. - 8:00 p.m.

Services Provided:

Medical Diagnosis, Treatment of Illnesses, Immunizations, Physical Examinations, Screenings for Asthma, Hypertension, Diabetes, Tuberculosis, HIV and other Sexually Transmitted Diseases, Nutritional Guidance, Health Education, Laboratory Testing, Pharmacy, Family Planning and Birth Control Counseling, Gynecological Services, On-Site X-Ray, Mental Health Counseling, Hospital Coverage, 24-Hour Physician Coverage

Satellite Site: Palatka Family Dental Center

Address: 2503 President Street
Palatka, FL 32177

Phone: (386) 328-7638

Fax: (386) 328-9644

Hours of Operation:

Monday – Thursday: 8:00 a.m. - 7:00 p.m.

Services Provided:

Primary Dental Care including diagnosis and treatment of dental caries and oral diseases, Preventive Dental Treatment, Preventive Oral Hygiene Instruction, Discounted Rates for eligible patients based on documented income, Languages: English and Spanish

Satellite Site: Crescent City Family Medical Center

Address: 306 Union Avenue
P.O. Box 146
Crescent City, FL 32112

Phone: (386) 698-1232

Fax: (386) 698-4154

Hours of Operation:

Monday – Friday: 8:00 a.m. - 5:00 p.m.

Services Provided:

Medical Diagnosis, Treatment of Illnesses, Immunizations, Physical Examinations, Screenings for Asthma, Hypertension, Diabetes, Tuberculosis, HIV and other Sexually Transmitted Diseases, Nutritional Guidance, Health Education, Laboratory Testing, Pharmacy, Family Planning and Birth Control Counseling, Gynecological Services, Mental Health Counseling, Hospital Coverage, 24-Hour Physician Coverage

Satellite Site: Arlington House, ACLF

Address: 203 S Moody Road
Palatka, FL 32177

Hours of Operation:

Monday – Friday: 8:00 a.m. - 5:00 p.m.

(Part-time Site: 8 hours per week)

Services Provided:

Services Provided to ACLF Residents Only

Satellite Site: Putnam Community Medical Center (Hospital Only)

Address: 611 Zeagler Drive
Palatka, FL 32177

Hours of Operation:
Monday – Friday: 8:00 a.m. - 5:00 p.m.

Services Provided:
Internal Medicine

Satellite Site: Hastings Youth Academy

Address: 765 E St. Johns Avenue
Hastings, FL 32145

Hours of Operation:
Monday – Friday: 8:00 a.m. - 5:00 p.m.
(Part-time Site: 4 hours per week)

Services Provided:
Services to Incarcerated Youth at Department of Juvenile Justice Site

Satellite Site: Interlachen Family Medical Center

Address: 1213 State Road 20
P.O. Box 190
Interlachen, FL 32148

Phone: (386) 684-4914
Fax: (386) 684-6524

Hours of Operation:
Monday – Friday: 8:00 a.m. - 5:00 p.m.

Services Provided:
Medical Diagnosis, Treatment of Illnesses, Immunizations, Physical Examinations, Screenings for Asthma, Hypertension, Diabetes, Tuberculosis, HIV and other Sexually Transmitted Diseases, Nutritional Guidance, Health Education, Laboratory Testing, Pharmacy, Family Planning and Birth Control Counseling, Gynecological Services, Mental Health Counseling, Dental, Hospital Coverage, 24-Hour Physician Coverage

Satellite Site: Welaka Family Medical Center

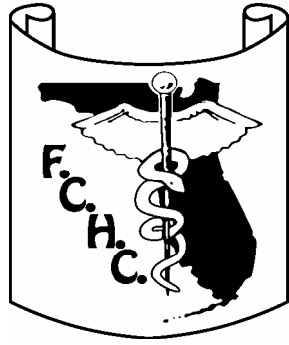
Address: 405 Elm Street
P.O. Box 428
Welaka, FL 32193

Phone: (386) 467-3171
Fax: (386) 467-3174

Hours of Operation:
Monday – Friday: 8:00 a.m. - 5:00 p.m.

Services Provided:

Medical Diagnosis, Treatment of Illnesses, Immunizations, Physical Examinations, Screenings for Asthma, Hypertension, Diabetes, Tuberculosis, HIV and other Sexually Transmitted Diseases, Nutritional Guidance, Health Education, Laboratory Testing, Pharmacy, Family Planning and Birth Control Counseling, Gynecological Services



Florida Community Health Centers, Inc.

CEO: Ed Brown

CMO: Michael F. Gervasi, D.O.

CFO: Susan Burwen

Administrative/Main Site: Florida Community Health Centers

Address: 4450 South Tiffany Drive
West Palm Beach, FL 33407

Phone: (561) 844-9443
Fax: (561) 844-1013

Webpage: <http://www.fchcinc.org>

Satellite Site: Clewiston Center

Address: 315 South WC Owen Avenue
Clewiston, FL 33440

Phone: (863) 983-7813

Hours of Operation:

Mon, Wed & Thurs: 8:00 a.m. - 5:00 p.m.
Tuesday: 8:00 a.m. - 7:00 p.m.
Friday: 8:00 a.m. - 4:00 p.m.

Services Provided:

Dental, Family Practice, Pediatrics, Workers' Compensation and Auto PIP

Satellite Site: Indiantown Center

Address: 15858 SW Warfield Blvd.
Indiantown, FL 34956

Phone: (772) 597-3596

Hours of Operation:

Monday: 9:00 a.m. - 7:00 p.m.
Tuesday, Wed, Thurs: 8:00 a.m. - 5:00 p.m.
Friday: 8:00 a.m. - 4:00 p.m.

Services Provided:

Dental, Family Practice, Pediatrics, Ryan White (HIV), Workers' Compensation and Auto PIP, X-Ray

Satellite Site: St. Lucie Women & Children

Address: 1501 SE Lennard Road
Port St. Lucie, FL 34952

Phone: (772) 337-4000

Hours of Operation:

Monday: 9:00 a.m. - 7:00 p.m.
Tuesday, Wed, Thurs: 8:00 a.m. - 5:00 p.m.
Friday: 8:00 a.m. - 4:00 p.m.

Services Provided:

Gynecology, Obstetrics

Satellite Site: Lakeshore Pediatrics & Dental

Address: 1100 North Parrott Avenue
Okeechobee, FL 34972

Phone: (863) 763-1951

Hours of Operation:

Monday: 8:00 a.m. - 7:00 p.m.
Tuesday, Wed, Thurs: 8:00 a.m. - 5:00 p.m.
Friday: 8:00 a.m. - 4:00 p.m.
Saturday: 8:00 a.m. - 12:00 p.m.
(DENTAL) Monday: 9:00 a.m. - 7:00 p.m.

(CLOSED) Saturday: June/July

Services Provided:

Dental, Family Practice, Pediatrics

Satellite Site: Lakeshore Medical- Adult

Address: 308 NW 5th Avenue
Okeechobee, FL 34972

Phone: (863) 763-7481

Hours of Operation:

Monday: 9:00 a.m. - 7:00 p.m.
Tuesday, Wed, Thurs: 8:00 a.m. - 5:00 p.m.
Friday: 8:00 a.m. - 4:00 p.m.

Services Provided:

Family Practice, Gynecology, Obstetrics, Ryan White (HIV), Workers' Compensation and Auto PIP

Satellite Site: Lakeshore Annex

Address: 103 NE 19th Drive
Okeechobee, FL 34972

Phone: (863) 467-6120

Hours of Operation:

Monday: 8:00 a.m. - 6:00 p.m.
Tuesday, Wed, Thurs: 8:00 a.m. - 5:00 p.m.
Friday: 8:00 a.m. - 4:00 p.m.

Services Provided:

Pediatrics, X-Ray

Satellite Site: Fort Pierce Center

Address: 1505 Delaware Avenue
Ft. Pierce, FL 34950

Phone: (772) 461-1402

Hours of Operation:

Monday, Wed, Thurs: 8:00 a.m. - 5:00 p.m.
Tuesday: 9:00 a.m. - 7:00 p.m.
Friday: 8:00 a.m. - 4:00 p.m.

Services Provided:

Dental, Family Practice, Gynecology, Obstetrics, Pediatrics, Ryan White (HIV), Workers' Compensation and Auto PIP, X-Ray

Satellite Site: Port St. Lucie Children's Health Center

Address: 1701 SE Hillmoor Drive, Suite 19
Port St. Lucie, FL 34952

Phone: (772) 335-8455

Hours of Operation:

Monday: 9:00 a.m. - 7:00 p.m.
Tuesday, Wed, Thurs: 8:00 a.m. - 5:00 p.m.
Friday: 8:00 a.m. - 4:00 p.m.

Services Provided:

Pediatrics

Satellite Site: North Palm Beach IDC

Address: 840 US Highway 1, Suite 120
North Palm Beach, FL 33408

Phone: (561) 776-8300

Hours of Operation:

Monday – Friday: 8:30 a.m. - 5:30 p.m.

Services Provided:

Infectious Disease

Satellite Site: Pahokee Center

Address: 170 S. Barfield Hwy., Suite 103
Pahokee, FL 33476

Phone: (561) 924-6100

Hours of Operation:

Monday & Wednesday: 8:00 a.m. - 5:00 p.m.
Tuesday & Thursday: 8:30 a.m. - 7:00 p.m.
Friday & Saturday: 8:00 a.m. - 2:00 p.m.

Services Provided:

Family Practice, Pediatrics, Workers' Compensation and Auto PIP



Health Care Center for the Homeless

CEO: Bakari Burns

CMO: Jamie Torner, MD, Medical Director

Administrative/Main Site:

Health Care Center for the Homeless/ Orange Blossom Family Health Center

Address: 232 North Orange Blossom Trail
Orlando, FL 32805

Phone: (407) 428-5751

Fax: (407) 428-6204

Hours of Operation:

Monday – Friday: 8:00 a.m. - 5:00 p.m.

Services Provided:

Family Medicine, Oral Health (including Medicaid for children and dentures for impoverished adults), Behavioral Health, Vision, Pharmacy

Webpage: <http://www.hcch.org/home1.htm>



Helen B. Bentley Family Health Center

CEO: Caleb Davis

CMO: Dr. Anthony Stanley

CFO: Marcia Carty

Administrative/Main Site: Helen B. Bentley Family Health Center

Address: 3090 SW 37th Avenue
Coconut Grove, FL 33133

Phone: (305) 351-1316

Fax: (305) 444-7866

Hours of Operation:

Monday: 8:00 a.m. - 8:00 p.m.

Tuesday, Wed, Thurs: 8:00 a.m. - 6:00 p.m.

Friday: 8:00 a.m. - 5:00 p.m.

Services Provided:

Obstetrics: Pre and Post Natal Care, Pediatrics: Well Baby and Sick Baby, EPSDT Screening, Gynecological Care, Podiatry, Optometry, Behavioral Health Services, Chiropractic and Physical Therapy, School and Employment Physicals, General Medicine, HIV/AIDS Treatment and Referrals, On-Site Pharmacy Services, WIC, Immunizations: Children and Adults, Radiology: Diagnostic X-Ray Procedures, On-Site Laboratory Testing, Treatment of Minor Emergencies, Vision and Hearing Testing, Diabetic Screening/Follow-Up, Hypertension Screening/Follow-Up, Sickle Cell Screening, Dentistry: Preventive and Restorative Procedures, Internal Medicine, Gerontological Specialization (concerning physical problems of the elderly), After Hours Doctors On Call Service (via telephone)

Satellite Site: Ponce De Leon Middle School

Address: 5801 August Street
Miami, FL 33146

Phone: (305) 661-1611

Hours of Operation:

Monday: 8:00 a.m. - 8:00 p.m.
Tuesday, Wed, Thurs: 8:00 a.m. - 6:00 p.m.
Friday: 8:00 a.m. - 5:00 p.m.

Services Provided:

School-based health

Satellite Site: Coconut Grove Elementary, Coral Gables High &
Frances S. Tucker Elementary School

Address: 3500 Douglas Road
Miami, FL 35133

Phone: (305) 567-3533

Hours of Operation:

Monday: 8:00 a.m. - 8:00 p.m.
Tuesday, Wed, Thurs: 8:00 a.m. - 6:00 p.m.
Friday: 8:00 a.m. - 5:00 p.m.

Services Provided:

School-based health



Jessie Trice Community Health Center

CEO: Annie Neasman, MS, RN

CMO: Fatima Zafar, MD

COO: Belita Wyatt

Chief of HR Officer: Deborah Rice-Lamar

VP/ Fiscal Affairs: Emerson Stevenson

VP/ Nursing/ Clinical Services: Annie M. Banks

VP/ Ancillary & Special Population Services: Ruth Duval

VP/ Corporate Affairs: Henry Thompson

Executive Assistant: Clementine Clinch

Administrative Site: Economic Opportunity Family Health Center

Address: 700 S Royal Poinciana Blvd., Suite 300
Miami, FL 33166

Phone: (305) 805-1700

Fax: (305) 805-1715

Hours of Operation:

Monday – Friday: 8:00 a.m. - 5:00 p.m.

Satellite Site: Jefferson Reaves House: Women's Residential

Address: 2985 NW 54th Street
Miami, FL 33147

Phone: (305) 637-6489

Hours of Operation:
24 Hours

Services Provided:

Individual, Family and Group Counseling, Substance Education, Relapse Prevention, Smoking Cessation, Conflict Resolution and Harm Reduction, Nutrition Classes, Health and Wellness Didactic Groups, Job Readiness, Management of Medication, Women's Health Issues, GED, HIV Education and Prevention Classes, Social and Life Skills, Recreation Services

Satellite Site: Flamingo Medical Center

Address: 901 East 10th Avenue, Bay 39
Hialeah, FL 33010

Phone: (305) 887-0004

Hours of Operation:
Monday: 11:00 a.m. - 8:00 p.m.
Tuesday, Wed, Thurs, Fri: 8:00 a.m. - 5:00 p.m.

Services Provided:

Pediatrics, OB/GYN, Geriatrics, Family Medicine, Dentistry, Psychology, Pharmacy, Laboratory, Substance Abuse, HIV/AIDS, Case Management, Childcare, School-based and Mobile Health Services

Satellite Site: James E. Scott Center

Address: 7200 NW 22nd Avenue
Miami, FL 33142

Phone: (305) 835-8122

Hours of Operation:
Monday, Tues, Thurs, Fri: 8:00 a.m. - 5:00 p.m.
Wednesday: 11:00 a.m. - 8:00 p.m.

Services Provided:

Pediatrics, OB/GYN, Geriatrics, Family Medicine, Dentistry, Psychology, Pharmacy, Laboratory, Substance Abuse, HIV/AIDS, Case Management, Childcare, School-based and Mobile Health Services

Satellite Site: Jessie Trice North

Address: 1220 NW 95th Street
Miami, FL 33147

Phone: (305) 694-6900

Hours of Operation:

Monday – Friday: 8:00 a.m. - 5:00 p.m.

Services Provided:

Pediatrics, OB/GYN, Geriatrics, Family Medicine, Dentistry, Psychology, Pharmacy, Laboratory, Substance Abuse, HIV/AIDS, Case Management, Childcare, School-based and Mobile Health Services

Satellite Site: COPE North Center Comprehensive High School
for Adolescents

Address: 9950 NW 19th Avenue
Miami, FL 33147

Phone: (305) 691-4547

Hours of Operation:

Monday – Friday: 8:00 a.m. - 5:00 p.m.

Services Provided:

Pediatrics, OB/GYN, Family Medicine, Nutrition Services

Satellite Site: Lillie C. Evans Elementary

Address: 1895 NW 75th Street
Miami, FL 33147

Phone: (305) 691-4973

Hours of Operation:

Monday – Friday: 8:00 a.m. - 5:00 p.m.

Services Provided:

School Based Health

Satellite Site: Poinciana Park Elementary

Address: 6745 NW 23rd Avenue
Miami, FL 33147

Phone: (305) 696-1501

Hours of Operation:

Monday – Friday: 8:00 a.m. - 5:00 p.m.

Services Provided:

School Based Health

Satellite Site: Jessie Trice Center for Community Health

Address: 5361 NW 22nd Avenue
Miami, FL 33142

Phone: (305) 637-6400

Hours of Operation:

Monday, Tues, Thurs: 8:00 a.m. - 8:00 p.m.

Wednesday & Friday: 8:00 a.m. - 5:00 p.m.

Saturday: 8:00 a.m. - 12:00 p.m.

Services Provided:

Pediatrics, OB/GYN, Geriatrics, Family Medicine, Dentistry, Psychology, Pharmacy, Laboratory, Substance Abuse, HIV/AIDS, Case Management, Childcare, School-based and Mobile Health Services

Satellite Site: Miami Edison Children's Center

Address: 6161 NW 5th Court
Miami, FL 33127

Phone: (305) 754-7044

Hours of Operation:

Monday – Friday: 8:00 a.m. - 5:00 p.m.

Services Provided:

Pediatrics, School-based and Mobile Health Services

Satellite Site: Charles R. Drew Elementary

Address: 1775 NW 65th Street
Miami, FL 33142

Phone: (305) 694-2362

Hours of Operation:

Monday – Friday: 8:00 a.m. - 5:00 p.m.

Services Provided:

School Based Health

Satellite Site: Women's Center at North Shore Hospital

Address: 1190 NW 95th Street, Suite 110
Miami, FL 33150

Phone: (305) 696-7759

Hours of Operation:

Monday – Friday: 8:00 a.m. - 5:00 p.m.

Services Provided:

Pediatrics, OB/GYN, Geriatrics, Family Medicine, Dentistry, Psychology, Pharmacy, Laboratory, Substance Abuse, HIV/AIDS, Case Management, Childcare, School-based and Mobile Health Services

Satellite Site: Miami Central Senior High

Address: 1781 NW 95th Street
Miami, FL

Phone: (305) 637-6400

Hours of Operation:

Monday – Friday: 8:00 a.m. - 5:00 p.m.

Services Provided:

Primary Care, School-based and Mobile Health Services

Satellite Site: Norland Family Health Center

Address: 18360 NW 7th Avenue
Miami, FL 33056

Phone: (305) 694-6270

Hours of Operation:

Monday – Friday: 8:00 a.m. - 5:00 p.m.

Services Provided:

Pediatrics, OB/GYN, Geriatrics, Family Medicine, Dentistry, Psychology, Pharmacy, Laboratory, Substance Abuse, HIV/AIDS, Case Management, Childcare, School-based and Mobile Health Services

Liberty County Health Department

CEO: Eugene Charbonneau,MD

COO: Kelly King

Administrative/Main Site: Liberty County Health Department - FQHC

Address: 12832 North Central Avenue
Bristol, FL 32321

Phone: (850) 643-2415
Fax: (850) 643-5689

Hours of Operation:
Monday: 8:00 a.m. - 5:00 p.m.

Services Provided:
Primary Medical Care Services, Family Planning, Immunizations, Migrant Farm Worker Center and Interpreter Services Available



Manatee County Rural Health Services

CEO: Mickey Presha

COO: Ray Fusco

CMO: George Van Buren, MD

Administrative/Main Site: Manatee County Rural Health Services

Address: 12294 US Highway 301 North
Parrish, FL 34219

Phone: (941) 776-4000

Fax: (941) 776-4010

Hours of Operation:

Monday: 8:00 a.m. - 5:00 p.m.

Services Provided:

No Medical Services; Corporate Support Only.

Satellite Site: Arcadia Family Healthcare Center

Address: 1707 East Oak Street
Arcadia, FL 34266

Phone: (863) 494-1918

Services Provided:

Obstetrics, Gynecology, On-Site Medication Delivery

Satellite Site: North Manatee Family Healthcare Center

Address: 5600 Bayshore Road
Palmetto, FL 34221

Phone: (941) 721-2020

Hours of Operation:

Monday: 8:00 a.m. - 8:00 p.m.

Tuesday: 8:00 a.m. - 5:00 p.m.

Wednesday: 8:00 a.m. - 1:00 p.m.

Thurs & Friday: 8:00 a.m. - 5:00 p.m.

Services Provided:

Family Practice, Internal Medicine, Pediatrics, Podiatry, Pharmacy

Satellite Site: Myakka Family Healthcare Center

Address: 37220 Glenwood Avenue
Myakka City, FL 34251

Phone: (941) 322-6500

Hours of Operation:

Monday, Tues, Wed: 8:00 a.m. - 5:00 p.m.

Thursday: 8:00 a.m. - 8:00 p.m.

Friday: 8:00 a.m. - 1:00 p.m.

Services Provided:

Family Practice, On-Site Medication Delivery

Satellite Site: Southeast Family Healthcare Center

Address: 919 53rd Avenue East
Bradenton, FL 34203

Phone: (941) 751-8100

Hours of Operation:

Monday, Tues, Wed: 8:00 a.m. - 5:00 p.m.

Thursday: 8:00 a.m. - 8:00 p.m.

Friday: 8:00 a.m. - 5:00 p.m.

Services Provided:

Family Practice, Internal Medicine, Pharmacy

Satellite Site: Michael Bach Community Resource Center

Address: 2703 19th Street Court East
Bradenton, FL 34208

Phone: (941) 708-8500

Hours of Operation:

Monday: 8:00 a.m. - 8:00 p.m.

Tuesday, Wed, Thurs: 8:00 a.m. - 5:00 p.m.

Friday: 8:00 a.m. - 1:00 p.m.

Services Provided:

HIV/AIDS Primary Care, Case Management, Support Services, Clinical Dietician, Food Pantry, Mental Health, HIV Testing Site

Satellite Site: Lawton Chiles Children and Family Healthcare Center

Address: 1515 26th Avenue East
Bradenton, FL 34208

Phone: (941) 708-8600

Hours of Operation:

Monday – Friday: 8:00 a.m. - 8:00 p.m.

Services Provided:

Pediatrics, Children's Dental, Pharmacy

Satellite Site: Community Care Family Clinic

Address: 1110 East Gibson Street
Arcadia, FL 34266

Phone: (863) 494-6222

Hours of Operation:

Monday, Tues, Thurs, Fri: 8:00 a.m. - 5:00 p.m.

Wednesday: 8:00 a.m. - 8:00 p.m.

Saturday: 8:00 a.m. - 1:00 p.m.

Services Provided:

Family Practice, Mental Health

Satellite Site: Edgar H. Price Jr. Children and Family Healthcare Center

Address: 12271 US Highway 301 North
Parrish, FL 34219

Phone: (941) 776-4050

Hours of Operation:

Monday, Tues, Thurs: 8:00 a.m. - 5:00 p.m.

Wednesday: 8:00 a.m. - 8:00 p.m.

Friday: 8:00 a.m. - 1:00 p.m.

Services Provided:

Family Practice, Pediatrics, Pharmacy, OB/GYN

Satellite Site: USF Gerontology Physician's Office

Address: 1720 Manatee Avenue East
Bradenton, FL 34208

Phone: (941) 714-7475

Hours of Operation:

Monday – Friday: 8:00 a.m. - 5:00 p.m.

Services Provided:

Obstetrics Ultrasound

Satellite Site: Braden River Family Healthcare Center

Address: 6050 State Road 70 E, Suite B
Bradenton, FL 34203

Phone: (941) 751-8149

Hours of Operation:

Monday: 8:00 a.m. - 8:00 p.m.

Tuesday, Thur, Fri: 8:00 a.m. - 5:00 p.m.

Wednesday: 8:00 a.m. - 1:00 p.m.

Services Provided:

Family Practice

Satellite Site: Manatee Pediatrics and Westgate OB/GYN

Address: 712 39th Street West
Bradenton, FL 34205

Phone: Pediatrics: (941) 748-4602
OB/GYN: (941) 714-7150

Hours of Operation:

Monday: 8:00 a.m. - 8:00 p.m.
Tuesday – Friday: 8:00 a.m. - 5:00 p.m.

Services Provided:

Pediatrics, OB/GYN

Satellite Site: Riverview Foot and Ankle Specialists

Address: 212 2nd Avenue East
Bradenton, FL 34208

Phone: (941) 741-3338

Hours of Operation:

Monday – Friday: 8:00 a.m. - 5:00 p.m.

Services Provided:

Podiatry

Satellite Site: North County Healthcare Center

Address: 2400 Colson Avenue
Sarasota, FL 34234

Phone: (941) 373-7845

Hours of Operation:

Monday: 8:00 a.m. - 8:00 p.m.
Tuesday – Thurs: 8:00 a.m. - 5:00 p.m.
Friday: 8:00 a.m. - 1:00 p.m.

Services Provided:

Family Practice

Satellite Site: Lakewood Ranch OB/GYN

Address: 8340 Lakewood Ranch Blvd., Suite 300
Bradenton, FL 34202

Phone: (941) 316-8200

Hours of Operation:

Monday – Friday: 8:00 a.m. - 5:00 p.m.

Services Provided:

OB/GYN

Satellite Site: Palmetto Family Healthcare Center

Address: 404 7th Street West
Palmetto, FL 34221

Phone: (941) 729-3856

Hours of Operation:

Monday, Wed, Fri: 8:00 a.m. - 5:00 p.m.

Tuesday: 8:00 a.m. - 8:00 p.m.

Thursday: 7:30 a.m. - 12:30 p.m.

Services Provided:

Family Practice

Satellite Site: Bradenton Family Chiropractic Clinic

Address: 10140 SR 70 East, Suite 101
Bradenton, FL 34202

Phone: (941) 758-4055

Hours of Operation:

Monday – Friday: 8:00 a.m. - 5:00 p.m.

Services Provided:

Chiropractic

Satellite Site: East Manatee Family Healthcare Center

Address: 1312 Manatee Avenue East
Bradenton, FL 34208

Phone: (941) 708-8706

Hours of Operation:

Monday – Saturday: 8:00 a.m. - 5:00 p.m.

Sunday: 1:00 p.m. - 8:00 p.m.

Services Provided:

Acute Care/ Walk-In, Family Practice, OB/GYN, Dental, Optometry, Chiropractic,
Pharmacy, MIS/IT Department



Miami Beach Community Health Center

CEO: Kathryn Abbate, MHA

CFO: Stanley B. DeHart, Jr., CPA, Executive VP of Finance

CMO: Mark Rabinowitz, MD, FACOG, Executive VP of Medical Affairs

Key Contact: Diego Martinez, MBA, Executive VP of Corporate Compliance

Administrative Office: Miami Beach Community Health Center

Address: 11645 Biscayne Boulevard
Suite 207
Miami, FL 33181

Phone: (305) 538-8835 ext #1600

Fax: (305) 532-5766

Main Site: Stanley C. Myers Center

Address: 710 Alton Road
Miami Beach, FL 33139

Phone: (305) 538-8835

Fax: (305) 532-5766

Hours of Operation:

Monday & Wednesday: 7:30 a.m. - 6:00 p.m.

Tuesday, Thursday, Friday: 7:30 a.m. - 4:00 p.m.

Services Provided:

Behavioral Health, Counseling, Dentistry, Developmental Screens, Family Planning, General Medicine, Health Education, Immigration Physicals, Immune Support Programs, Immunizations/Injections, Internal Medicine, Obstetrics/Gynecology, Pediatrics, Pharmacy, Podiatry, Referrals to Specialists, Support Groups, Vision and Hearing Screening

Webpage: www.miamibeachhealth.com

Satellite Site: Beverly Press Center

Address: 1221 71st Street
Miami Beach, FL 33141

Phone: (305) 538-8835

Hours of Operation:

Monday – Friday: 7:00 a.m. - 7:00 p.m.

Services Provided:

Behavioral Health, Counseling, Dentistry, Developmental Screens, Family Planning, General Medicine, Health Education, Immigration Physicals, Immune Support Programs, Immunizations/Injections, Internal Medicine, Obstetrics/Gynecology, Pediatrics, Pharmacy, Podiatry, Referrals to Specialists, Support Groups, Vision and Hearing Screening

Satellite Site: Dr. Solomon S. Lichter “Hi-Tides” Health Center at
Miami Beach Senior High School

Address: 2231 Prairie Avenue
Miami Beach, FL 33139

Phone: (305) 538-2816

Hours of Operation:

Monday – Friday: 7:00 a.m. - 3:30 p.m.

(This center is open only to students of the high school)

Services Provided:

Counseling, Screening, Family Planning, Health Education, Physicals, Immunizations, Sick and Well-Child care, Referrals to Specialists and Vision and Hearing Screening

Satellite Site: Miami Beach Community Health Center in North Miami

Address: 12340 NE 6th Court
North Miami, FL 33161

Phone: (305) 538-8835

Hours of Operation:

Monday – Friday: 7:30 a.m. - 4:00 p.m.

Services Provided:

Behavioral Health, Counseling, Dentistry, Developmental Screens, Family Planning, General Medicine, Health Education, Immigration Physicals, Immune Support Programs, Immunizations/Injections, Internal Medicine, Obstetrics/Gynecology, Pediatrics, Pharmacy, Podiatry, Referrals to Specialists, Support Groups, Vision and Hearing Screening

Satellite Site: Behavioral Health

Address: 1179 71st Street
Miami Beach, FL 33141

Phone: (305) 538-8835

Hours of Operation:

Monday – Friday: 8:00 a.m. - 4:00 p.m.

Services Provided:

Behavioral Health, Counseling, General Medicine, Health Education, Referrals to Specialists and Support Groups



Nature Coast Community Health Center

CEO: Elizabeth Callaghan

CFO: Michael L. Sentman

CMO: Kelli Maw, MD, MPH

Administrative/Main Site: Nature Coast Community Health Center

Address: 300 South Main Street
Brooksville, FL 34601

Phone: (352) 540-6800 ext. 82114

Fax: (352) 754-4132

Hours of Operation:

Monday – Friday: 8:00 a.m. - 5:00 p.m.

Services Provided:

Primary Care, Laboratory, Primary Medical Care, Family Planning, HIV Test and Counseling, Blood Lead Level Testing, Immunizations, OB/GYN, TB Therapy, Dental Care, Mental Health Treatment, Hearing Screening, Pharmacy, Vision Screening

North Broward Hospital District – Health Care for the Homeless

Director: Scott DiMarzo

Medical Director: John Berges, MD

HCH Coordinator: Nadine Reeves, RN, BSN

Administrative/Main Site: North Broward Hospital District Health Care for the Homeless

Address: 303 SE 17th Street, Suite 502
Ft. Lauderdale, FL 33316

Phone: (954) 355-4953

Fax: (954) 355-4936

Hours of Operation:

Monday – Friday: 8:00 a.m. - 12:00 p.m. / 1:00 p.m. - 5:00 p.m.

Services Provided:

Comprehensive health, dental and social services at mobile sites and community based health centers, including adult and family shelters, detox and substance abuse treatment centers, and day centers. Access to substance abuse treatment is made through referral to Broward County Alcohol/Drug Abuse Services, residential treatment centers, and other local treatment facilities.

North Florida Medical Centers, Inc.

CEO: Joel Montgomery

CMO: R. Scott Hanson, MD, MPH

CFO: Don Porterfield

Administrative/Main Site: North Florida Medical Centers, Inc.

Address: 535 John Knox Road
Tallahassee, FL 32303

Phone: (850) 385-4494

Fax: (850) 298-6050

Hours of Operation:

Monday – Friday: 8:00 a.m. - 12:00 p.m. / 1:00 p.m. - 5:00 p.m.

Services Provided:

Corporate Support Only, No Medical Services

Satellite Site: Crestview Health Center

Address: 4100 S Ferndon Boulevard, Suite C5
Crestview, FL 32536

Phone: (850) 682-1164

Fax: (850) 682-5302

Hours of Operation:

Monday – Friday: 8:00 a.m. - 12:00 p.m. / 1:00 p.m. - 5:00 p.m.

Services Provided:

General Primary Medical Care, Diagnostic Laboratory, Diagnostic X-Ray, Diagnostic Tests/Screens, Limited Urgent Medical Care, On Call 24-Hour Coverage, Family Planning, HIV Testing, Immunizations, Preventive Gynecological Care, Nutrition (Not WIC), Vision Screening, Health Education, Translation, Services by Referral (Occ./Voc. Therapy, Physical Therapy, Podiatry, WIC), Discounted Drug Program

Satellite Site: Family Medical Practice

Address: 351 Horsehoe Beach Road
Cross City, FL 32628

Phone: (352) 498-3349

Fax: (352) 498-0716

Hours of Operation:

Monday – Friday: 8:00 a.m. - 12:00 p.m. / 1:00 p.m. - 5:00 p.m.

Services Provided:

General Primary Medical Care, Diagnostic Laboratory, Diagnostic X-Ray, Diagnostic Tests/Screens, Limited Urgent Medical Care, On Call 24-Hour Coverage, Family Planning, HIV Testing, Immunizations, Preventive Gynecological Care, Nutrition (Not WIC), Vision Screening, Health Education, Translation, Services by Referral (Occ./Voc. Therapy, Physical Therapy, Podiatry, WIC), Discounted Drug Program

Satellite Site: Eastpoint Medical Center

Address: 35 Island Drive, Suite 14
Eastpoint, FL 32328

Phone: (850) 670-8585

Fax: (850) 670-8582

Hours of Operation:

Monday – Friday: 8:00 a.m. - 12:00 p.m. / 1:00 p.m. - 5:00 p.m.

Services Provided:

General Primary Medical Care, Diagnostic Laboratory, Diagnostic X-Ray, Diagnostic Tests/Screens, Urgent Medical Care, 24-Hour Coverage, Family Planning, HIV Testing, Immunizations, Following Hospitalized Patients, Gynecological Care, Hearing Screening, Nutrition (Not WIC), Vision Screening, Case Management, Health Education, Translation, Nursing Home and Other Placement, Outreach, TB Therapy Treatment/Counseling, Developmental Screening, 24-Hour Crisis, Other Mental Health, Substance Abuse, Other Substance Abuse, Services by Referral (Environmental Health, Occ./Voc. Therapy, Physical Therapy, Podiatry, WIC, Child Care, Discharge Planning, Eligibility Assistance, Emp./Ed. Counseling, Food Bank/Meals, Homemaker/Aide, Housing Assistance, Transportation), Discounted Drug Program

Satellite Site: Gadsden Medical Center

Address: 278 LaSalle Leffall Drive
P.O. Box 2009
Quincy, FL 32353

Phone: (850) 875-9500
Fax: (850) 627-2767

Hours of Operation:

Monday – Friday: 8:00 a.m. - 12:00 p.m. / 1:00 p.m. - 5:00 p.m.

Services Provided:

General Primary Medical Care, Diagnostic Laboratory, Diagnostic X-Ray, Diagnostic Tests/Screens, Urgent Medical Care, 24-Hour Coverage, Family Planning, HIV Testing, Immunizations, Following Hospitalized Patients, Gynecological Care, Hearing Screening, Nutrition (Not WIC), Vision Screening, Case Management, Health Education, Translation, Nursing Home and Other Placement, Outreach, TB Therapy Treatment/Counseling, Developmental Screening, 24-Hour Crisis, Other Mental Health, Substance Abuse, Other Substance Abuse, Services by Referral (Environmental Health, Occ./Voc. Therapy, Physical Therapy, Podiatry, WIC, Child Care, Discharge Planning, Eligibility Assistance, Emp./Ed. Counseling, Food Bank/Meals, Homemaker/Aide, Housing Assistance, Transportation), Discounted Drug Program

Satellite Site: Wewahitchka Medical Center

Address: 255 West River Road
Wewahitchka, FL 32465

Phone: (850) 639-5536
Fax: (850) 639-5536

Hours of Operation:

Monday – Friday: 8:00 a.m. - 12:00 p.m. / 1:00 p.m. - 5:00 p.m.

Services Provided:

General Primary Medical Care, Diagnostic Laboratory, Diagnostic X-Ray, Diagnostic Tests/Screens, Urgent Medical Care, 24-Hour Coverage, Family Planning, HIV Testing, Immunizations, Following Hospitalized Patients, Gynecological Care, Hearing Screening, Nutrition (Not WIC), Vision Screening, Case Management, Health Education, Translation, Nursing Home and Other Placement, Outreach, TB Therapy Treatment/Counseling, Developmental Screening, 24-Hour Crisis, Other Mental Health, Substance Abuse, Other Substance Abuse, Services by Referral (Environmental Health, Occ./Voc. Therapy, Physical Therapy, Podiatry, WIC, Child Care, Discharge Planning, Eligibility Assistance, Emp./Ed. Counseling, Food Bank/Meals, Homemaker/Aide, Housing Assistance, Transportation), Discounted Drug Program

Satellite Site: Mayo Health Services

Address: 144 SW Virginia Circle
Mayo, FL 32066

Phone: (386) 294-1226

Fax: (386) 294-4218

Hours of Operation:

Monday – Friday: 8:00 a.m. - 12:00 p.m. / 1:00 p.m. - 5:00 p.m.

Services Provided:

General Primary Medical Care, Diagnostic Laboratory, Diagnostic X-Ray, Diagnostic Tests/Screens, Urgent Medical Care, 24-Hour Coverage, Family Planning, HIV Testing, Immunizations, Following Hospitalized Patients, Gynecological Care, Hearing Screening, Nutrition (Not WIC), Vision Screening, Case Management, Health Education, Translation, Nursing Home and Other Placement, Outreach, TB Therapy Treatment/Counseling, Developmental Screening, 24-Hour Crisis, Other Mental Health, Substance Abuse, Other Substance Abuse, Services by Referral (Environmental Health, Occ./Voc. Therapy, Physical Therapy, Podiatry, WIC, Child Care, Discharge Planning, Eligibility Assistance, Emp./Ed. Counseling, Food Bank/Meals, Homemaker/Aide, Housing Assistance, Transportation), Discounted Drug Program

Satellite Site: Tri-County Family Health Care

Address: 193 NW US 221
Greenville, FL 32331

Phone: (850) 948-2840

Fax: (850) 948-2386

Hours of Operation:

Monday – Friday: 8:00 a.m. - 12:00 p.m. / 1:00 p.m. - 5:00 p.m.

Services Provided:

General Primary Medical Care, Diagnostic Laboratory, Diagnostic X-Ray, Diagnostic Tests/Screens, Urgent Medical Care, 24-Hour Coverage, Family Planning, HIV Testing, Immunizations, Following Hospitalized Patients, Gynecological Care, Hearing Screening, Nutrition (Not WIC), Vision Screening, Case Management, Health Education, Translation, Nursing Home and Other Placement, Outreach, TB Therapy Treatment/Counseling, Developmental Screening, 24-Hour Crisis, Other Mental Health, Substance Abuse, Other Substance Abuse, Services by Referral (Environmental Health, Occ./Voc. Therapy, Physical Therapy, Podiatry, WIC, Child Care, Discharge Planning, Eligibility Assistance, Emp./Ed. Counseling, Food Bank/Meals, Homemaker/Aide, Housing Assistance, Transportation)

Satellite Site: Taylor Dental Center

Address: 409 East Ash Street
Perry, FL 32347

Phone: (850) 223-2578
Fax: (850) 223-3047

Hours of Operation:

Monday – Friday: 8:00 a.m. - 12:00 p.m. / 1:00 p.m. - 5:00 p.m.

Services Provided:

General Primary Dental Care (Preventive; Limited Emergency)

Satellite Site: Taylor Medical Center

Address: 1709 South Jefferson
Perry, FL 32348

Phone: (850) 838-2030
Fax: (850) 838-2040

Hours of Operation:

Monday – Friday: 8:00 a.m. - 12:00 p.m. / 1:00 p.m. - 5:00 p.m.

Services Provided:

Primary Care, Diagnostic Laboratory, X-Ray, Diagnostic Tests/Screens, Urgent Medical Care, Family Planning, HIV Testing, Immunizations, Gynecological Care, Hearing Screening, Nutrition, Vision Screening, Case Management, Health Education, Translation, Nursing Home and Other Placement, Outreach, Mental Health, Substance Abuse, Other Substance Abuse, Services by Referral WIC, Child Care, Eligibility Assistance

Satellite Site: Wakulla Medical Center

Address: 1328 Costal Highway
Panacea, FL 32346

Phone: (850) 984-4735
Fax: (850) 984-4742

Hours of Operation:

Monday – Friday: 8:00 a.m. - 12:00 p.m. / 1:00 p.m. - 5:00 p.m.

Services Provided:

Primary Care, Diagnostic Laboratory, X-Ray, Diagnostic Tests/Screens, Urgent Medical Care, 24-Hour Coverage, Family Planning, HIV Testing, Immunizations, Gynecological Care, Hearing Screening, Nutrition, Vision Screening, Case Management, Health Education, Outreach, TB Therapy Treatment/Counseling, Other Mental Health, Substance Abuse, Services by Referral: Physical Therapy, Podiatry, WIC, Child Care, Eligibility Assistance, Discounted Drug Program

Northeast Florida Health Services

CEO: DeWayne Yates

CMO: April Ferguson, DO

CFO: Greg LeFils

Administrative/Main Site: Pierson Medical Center

Address: 114 North Volusia Avenue
Pierson, FL 32180

Phone: (386) 749-9449
Fax: (386) 749-9447

Hours of Operation:
Monday – Friday: 8:00 a.m. - 5:00 p.m.

Services Provided:

Pediatrics and Adolescent Medicine, Internal Medicine, Family Practice, Gynecology, School and Employment Physicals, Laboratory Testing, X-rays, Family Planning, Diabetes/Hypertension Management, Immunizations, Behavioral health services by referral

Satellite Site: DeLand Medical Center

Address: 844 West Plymouth Avenue
DeLand, FL 32720

Phone: (386) 738-2422

Satellite Site: Deltona Medical Center

Address: 2160 Howland Blvd., Suite 110
Deltona, FL 32738

Phone: (386) 532-0515

PanCare Community Health Center

COO: R. Michael Hill

CFO: Thomas E. Brewster, CPA

CMO: Raymond E. Matson, MD

Administrative Site: PanCare Community Health Center

Address: 431 Oak Avenue
Panama City, FL 32401

Phone: (850) 747-5599
Fax: (850) 872-4131

Main Site: PanCare Medical Center

Address: 2309 East 15th Street
Panama City, FL 32405

Phone: (850) 747-5272
Fax: (850) 747-5274

Hours of Operation:
Monday – Friday: 8:00 a.m. - 5:00 p.m.

Services Provided:
Primary Care

Satellite Site: PanCare Dental Center

Address: 707 Jenks Avenue
Panama City, FL 32301

Phone: (850) 747-5272
Fax: (850) 747-5274

Hours of Operation:
Monday – Friday: 8:00 a.m. - 5:00 p.m.

Services Provided:
Preventive Dentistry

Pinellas County Human Services Department – Health Care for the Homeless

Director: Maureen Freaney

Medical Director: Paulette Thompson, DO

HCH Coordinator: Lisa S. Freeman

Administrative/Main Site:

Pinellas County Human Services Department Health Care for the Homeless

Address: 647 First Avenue North
St. Petersburg, FL 33701

Phone: (727) 582-7595

Fax: (727) 582-7228

Hours of Operation:

Monday – Friday: 8:00 a.m. - 12:00 p.m. / 1:00 p.m. - 5:00 p.m.

Services Provided:

Primary medical care from a team including one physician, two RNs, a social worker, and two social work assistants/drivers. Services include comprehensive primary care for children and adults, well child/prevention care, emergency health services, prescriptions, referrals and payment for inpatient hospitalization, outreach, entitlement eligibility assistance, referrals to other providers in the social services network, referrals to medical specialists, and dental services. Two ARNP's provide on-site mental health services.

Satellite Site:

Pinellas County Human Services Department Health Care for the Homeless
Mobile Medical Unit

Address: 2189 Cleveland Street, Suite 266
Clearwater, FL 33765



Premier Community Health Care Group

CEO: Kim Schuknecht

CMO: Marlene Hart, MD, MPH

CFO: Donna DeLong, CPA

Key Contact: Sue Hutson

Administrative/Main Site: Premier Community Health Care Group, Inc.

Address: 14130 7th Street
Dade City, FL 33525

Phone: (352) 518-2638

Fax: (352) 567-5193

Hours of Operation:

Monday – Friday: 8:00 a.m. - 5:00 p.m.

Services Provided:

Corporate Support Only, No Medical Services

Satellite Site: Premier Community Health Care Group Pharmacy

Address: 37944 Church Avenue
Dade City, FL 33525

Phone: (352) 518-2000

Hours of Operation:

Monday, Tues, Thurs, Fri: 8:00 a.m. - 5:00 p.m.

Wednesday: 10:00 a.m. - 7:00 p.m.

Services Provided:

Pharmacy (Reduced Cost Prescription, Prescription Review and Consultation)

Satellite Site: Dade City Health Center

Address: 37944 Church Avenue
Dade City, FL 33525

Phone: (352) 518-2000

Hours of Operation:

Monday, Tues, Thurs, Friday: 8:00 a.m. - 5:00 p.m.

Wednesday: 10:00 a.m. - 7:00 p.m.

(Additional Behavioral Health hours on Saturday: 9:00 a.m. - 5:00 p.m.)

Services Provided:

Health Services (Well Child/Adult Check-ups and Immunizations, Smoking Cessation Program, School/Sports/Work Physicals, Nutrition and Life Style Education, Diabetic Management Specialist, Certified Asthma/Allergy Specialist), Pharmacy (Reduced Cost Prescription, Prescription Review and Consultation), Dental Health Services, General and Cosmetic Dentistry, Oral Surgery, Extractions, and Cleaning), Behavioral Health Services (Psychiatric Evaluation, Medication Management and Therapy, Crisis Intervention and Case Management, Pain Management), Children and Women's Health

Satellite Site: Dade City Pediatrics Center

Address: 37944 Church Avenue
Dade City, FL 33525

Phone: (352) 518-2000

Hours of Operation:

Monday, Tues, Thurs, Friday: 8:00 a.m. - 5:00 p.m.

Wednesday: 10:00 a.m. - 7:00 p.m.

Saturday: 9:00 a.m. - 5:00 p.m. (Behavioral Health)

Services Provided:

Pediatrics

Satellite Site: Dade City OB/GYN

Address: 37944 Church Avenue
Dade City, FL 33525

Phone: (352) 518-2000

Hours of Operation:

Monday, Tues, Thurs, Friday: 8:00 a.m. - 5:00 p.m.

Wednesday: 10:00 a.m. - 7:00 p.m.

Services Provided:

OB/GYN

Satellite Site: Dade City Dental

Address: 37944 Church Avenue
Dade City, FL 33525

Phone: (352) 518-2000

Hours of Operation:

Monday, Tues, Thurs, Friday: 8:00 a.m. - 5:00 p.m.

Wednesday: 10:00 a.m. - 7:00 p.m.

Services Provided:

General and Cosmetic Dentistry, Oral Surgery, Extractions, Cleanings

Satellite Site: Women's Health Center

Address: 10605 US Highway 301
Dade City, FL 33525

Phone: (352) 518-2000

Hours of Operation:

Monday, Tues, Thur, Friday: 8:00 a.m. - 4:30 p.m.

Wednesday: 10:00 a.m. - 7:00 p.m.

Services Provided:

Children and Women's Health (Prenatal A-Team, Baby Care Education and Counseling, Child and Adolescents 18 and Younger, Illness, Chronic, Episodic, and Long Term, General Female Health Care, Pregnancy Testing and Family Planning, Routine and High Risk Prenatal Care, Prenatal Childbirth Preparation and Postpartum Care, In Hospital Care, including Child Birth, Breast Feeding Counseling, Non-Stress Testing, WIC, Medicaid Kidcare Certification On-Site, OB/GYN, Certified Nurse Midwives, Perinatology Services, Genetic Counseling)

Satellite Site: Behavioral Health Center

Address: 14027 5th Street
Dade City, FL 33525

Phone: (352) 518-2000

Hours of Operation:

Monday, Wed, Thurs, Friday: 8:00 a.m. - 5:00 p.m.

Tuesday: 10:00 a.m. - 7:00 p.m.

Saturday: 9:00 a.m. - 5:00 p.m.

Services Provided:

Behavioral Health Services (Psychiatric Evaluation, Medication Management and Therapy, Crisis Intervention and Case Management, Pain Management)

Satellite Site: Zephyrhills Children's Health Center

Address: 37918 Medical Arts Court
Zephyrhills, FL 33541

Phone: (352) 518-2000

Hours of Operation:

Monday - Friday: 8:00 a.m. - 8:00 p.m.
Saturday 8:00 a.m. - 1:00 p.m.

Services Provided:

Health Services (Well Child/Adult Check-ups and Immunizations, Smoking Cessation Program, School/Sports/Work Physicals, Nutrition and Life Style Education, Diabetic Management Specialist)

Satellite Site: Zephyrhills Family Health Center

Address: 37922 Medical Arts Court
Zephyrhills, FL 33541

Phone: (352) 518-2000

Hours of Operation:

Monday - Friday: 8:00 a.m. - 8:00 p.m.
Saturday 8:00 a.m. - 1:00 p.m.

Services Provided:

Health Services (Well Child Check-ups and Immunizations, Smoking Cessation Program, School/Sports/Work Physicals, Nutrition and Life Style Education, Diabetic Management Specialist)



Primary Care Medical Services of Poinciana

CEO: Sheri Brammer

CMO: Dagan Dalton, MD

CFO: Yvette Florian

Administrative/Main Site: Primary Care Medical Services of Poinciana

Address: 105 North Doverplum Avenue
Poinciana, FL 34758

Phone: (407) 943-8600

Fax: (407) 343-2002

Hours of Operation:

Monday, Tues, Thurs, Friday: 8:00 a.m. - 5:00 p.m.

Wednesday: 10:00 a.m. - 7:00 p.m.

Saturday: 8:00 a.m. - 12:00 p.m.

Services Provided:

Primary Care, Obstetrics/Gynecology, Family Planning, Immunizations, WIC, STD, Dental (by referral)

Satellite Site: Osceola County Health Department

Address: 1875 Boggy Creek Road
Kissimmee, FL 34744

Phone: (407) 343-2000

Hours of Operation:

Monday – Friday: 8:00 a.m. - 5:00 p.m.

Services Provided:

Primary Care, Obstetrics/Gynecology, Family Planning, Immunizations, WIC, STD, Dental (by referral)

Sarasota County Health Department

CEO: Leah H. McCallister, MS

Administrative/Main Site: North Port Health and Human Service Center

Address: 6950 Outreach Way
North Port, FL 34281



St. Joseph Care of Florida, Inc.

COO: Douglas M. Kent, MPH, Administrator

CMO: Kevin J. Murphy, MD

CFO: Joy Johnson, Operations Manager

Administrative/Main Site: St. Joseph Care of Florida, Inc.

Address: 2475 Garrison Avenue
Port St. Joe, FL 32456

Phone: (850) 227-1276
Fax: (850) 227-7589

Hours of Operation:

(MEDICAL CLINIC)

Monday – Friday: 7:30 a.m. - 6:30 p.m., EST

Saturday: 9:00 a.m. - 1:00 p.m.

(DENTAL CLINIC)

Tuesday – Friday: 7:00 a.m. -5:30 p.m., EST

Services Provided:

Social Services: Depression Screening, Counseling, Healthy Start; Full Service Dental Clinic, Chronic Disease: Diabetes, Hypertension; Primary Care Health Services, Digital X-Ray, Environmental Health.

(After-Hours and Saturday Clinic Offer Suturing of Minor Wounds and Treatment of Non-life Threatening Illness.)

Satellite Site: Gulf County Health Department

Address: 323 East Lake Avenue
Wewahitchka, FL 32465

Phone: (850) 984-4735

Hours of Operation:

(MEDICAL CLINIC)

Monday – Friday: 8:00 a.m. - 5:00 p.m., CST

(DENTAL CLINIC)

Monday – Thursday: 7:00 a.m. - 5:30 p.m., CST

Services Provided:

Social Services: Depression Screening, Counseling, Healthy Start; Full Service Dental Clinic, Chronic Disease: Diabetes, Hypertension; Primary Care Health Services, Environmental Health

Satellite Site: Gulf County Health Department

Address: 502 Fourth Street
Port St. Joe, FL 32465

Phone: (850) 227-1276

Hours of Operation:

(MEDICAL CLINIC)

Monday – Thursday: 7:00 a.m. - 5:00 p.m., EST

Friday: 8:00 a.m. - 12:00 p.m.

Services Provided:

Physical Therapeutic Exercise and Massage



The Sulzbacher Center for the Homeless

CEO: Audrey McKibbin Moran

VP of Health Center Services: Michael Cochran

CMO: Mary Robinson, MD

CFO: Greg Watts

Administrative/Main Site: I. M. Sulzbacher Center for the Homeless

Address: 611 East Adams Street
Jacksonville, FL 32202

Phone: (904) 394-8100

Fax: (904) 353-7345

Hours of Operation:

Monday – Friday: 8:00 a.m. - 5:00 p.m.

Services Provided:

(Medical Clinic) Vision Care/Glasses, Podiatry Services, Mental Health Service, Laboratory Testing, Drug Rehab Linkage, Asthma Clinic, Pediatric Clinic, Community Outreach, Mental Health Linkage (Dental Clinic) Primary, Secondary, and Tertiary Services at a small fee to patients, Some Limited Restorative Work for patients at cost of materials, HOPE Team, STAR Program, Community Partnerships with Baptist Medical Center, St. Vincent's Medical Center, We Care Jacksonville, UF Medical Residents, UNF, JU, and FCCJ Nursing Students

Satellite Site: I. M. Sulzbacher Center for the Homeless

Address: 850 6th Avenue South #500
Jacksonville Beach, FL 32250



Suncoast Community Health Centers

CEO: Brantz Roszel

MED DIR: Herb Pegues, MD

CAO: George Hammond

CFO: Robert Rodriguez

Administrative/Main Site: Suncoast Community Health Centers/ Ruskin Health Center

Address: 2814 14th Avenue, SE
Ruskin, FL 33570

Phone:

Administration Office: (813) 349-7568

Ruskin Health Center: (813) 349-7800

Fax: (813) 349-7561

Hours of Operation:

Monday, Wed, Thur, Friday: 8:00 a.m. - 5:00 p.m.

Tuesday: 10:00 a.m. - 7:00 p.m.

Services Provided:

Family Practice, Internal Medicine, OB/Gyn, Pediatrics, Lab, X-ray, Pharmacy, Dental, Transportation, Outreach, Translation

Satellite Site: SCHC Pediatrics, Plant City

Address: 502 North Mobley Street
Plant City, FL 33563

Phone: (813) 349-7654

Hours of Operation:

Monday, Thurs, Friday: 7:00 a.m. - 5:00 p.m.

Tuesday: 10:00 a.m. - 7:00 p.m.

Wednesday: 7:00 a.m. - 12:00 p.m.

Services Provided:

Pediatrics, Laboratory, Translation, Transportation, Outreach

Satellite Site: Dover Health Center

Address: 14618 SR 574
Dover, FL 33527

Phone: (813) 349-7700

Hours of Operation:

Monday, Wed, Thur, Friday: 8:00 a.m. - 5:00 p.m.
Tuesday: 10:00 a.m. - 7:00 p.m.

Services Provided:

Family Practice, Internal Medicine, OB/Gyn, Pediatrics, Lab, X-ray, Pharmacy, Dental, Transportation, Outreach, Translation

Satellite Site: Plant City Family Care

Address:
508 North Maryland Avenue
Plant City, FL 33563

Phone: (813) 349-7600

Hours of Operation:

Monday, Wed, Thur, Friday: 8:00 a.m. - 5:00 p.m.
Tuesday: 10:00 a.m. - 7:00 p.m.

Services Provided:

Family Practice, Internal Medicine, OB/Gyn, Pediatrics, Lab, X-ray, Pharmacy, Dental, Transportation, Outreach, Translation



Tampa Family Health Centers

CEO: Charlie Bottoms

COO: Stephanie Theaker

CFO: Edward Kutcher

CMO: Julio Sanchez

Administrative/Main Site: Tampa Community Health Centers

Address: 1502 East Fowler
Tampa, FL 33612

Phone: (813) 866-0930
Fax: (813) 866-0929

Hours of Operation:
Monday – Friday: 8:00 a.m. - 5:00 p.m.

Services Provided:
Adult and Pediatric Primary Care, Dental Services, Pharmacy, Psychiatry, Prenatal and Gynecological Services, School and Work Physicals, Social Service

Satellite Site: Lee Davis Health Center

Address: 3402 North 22nd Street
Tampa, FL 33605

Phone: (813) 272-6240

Hours of Operation:
Monday & Friday: 8:00 a.m. - 5:00 p.m.
Tuesday, Wed, Thurs: 8:00 a.m. - 7:00 p.m.

Services Provided:
Adult and Pediatric Primary Care, Dental Services, Pharmacy, Psychiatry, Prenatal and Gynecological Services, School and Work Physicals, Social Service

Satellite Site: North Tampa Community Health Center

Address: 1229 East 131st Avenue
Tampa, FL 33612

Phone: (813) 866-0950

Hours of Operation:

Monday, Wed, Friday: 8:00 a.m. - 5:00 p.m.

Tuesday & Thursday: 8:00 a.m. - 7:00 p.m.

Services Provided:

Adult and Pediatric Primary Care, Dental Services, Pharmacy, Psychiatry, Prenatal and Gynecological Services, School and Work Physicals, Social Service

Satellite Site: Peter Davis Health Center

Address: 1401 East 22nd Avenue
Tampa, FL 33605

Phone: (813) 248-6263

Hours of Operation:

Monday, Tue, Thur, Friday: 8:00 a.m. - 5:00 p.m.

Wednesday: 10:00 a.m. - 7:00 p.m.

Services Provided:

Adult and Pediatric Primary Care, Dental Services, Pharmacy, Psychiatry, Prenatal and Gynecological Services, School and Work Physicals, Social Service

Satellite Site: Tampa Family Health Center

Address: 1514 North Florida Avenue, Suite 300
Tampa, FL 33602

Phone: (813) 490-1957

Hours of Operation:

Monday – Friday: 8:00 a.m. - 5:00 p.m.

Services Provided:

Adult and Pediatric Primary Care, Dental Services, Pharmacy, Psychiatry, Prenatal and Gynecological Services, School and Work Physicals, Social Service

Satellite Site: West Tampa Health Center

Address: 2130 North Rome Avenue
Tampa, FL 33607

Phone: (813) 490-1426

Hours of Operation:
Monday – Friday: 8:00 a.m. - 5:00 p.m.

Services Provided:

Adult and Pediatric Primary Care, Dental Services, Pharmacy, Psychiatry, Prenatal and Gynecological Services, School and Work Physicals, Social Service

Satellite Site: Medical Mobile Unit Van

Address: Hillsborough County

Services Provided:
Community Outreach

Satellite Site: East Tampa Health Center

Address: 3630 N 50th Street
Tampa, FL 33619

Phone: (813) 231-1340

Satellite Site: Family Justice Center Health Center

Address: 9309 N Florida Avenue, Suite 109
Tampa, FL 33612



Thomas E. Langley Medical Center

CEO: Everett Kelly

Medical Director: Robert Carraway, MD

Senior Accountant: Gary Costantino

Administrative/Main Site: Thomas E. Langley Medical Center

Address: 1425 South US Highway 301
Sumterville, FL 33585

Phone: (352) 793-5900

Fax: (352) 793-6269

Hours of Operation:

Monday – Friday: 8:00 a.m. - 5:00 p.m.

Saturday: 8:00 a.m. - 2:00 p.m.

Services Provided:

Family Practice, Internal Medicine, Pediatrics, Urgent Care, Geriatrics, Behavioral Health, Laboratory, Pharmacy, Dental, Sumter County Health Start Program, Diagnostic Imaging, Radiology, Dermatology, Podiatry

Satellite Site: Family Medical Center at the Shores

Address: 9305 SE Maricamp Road
Ocala, FL 34472

Phone: (352) 680-3247



Treasure Coast Community Health, Inc.

CEO: vacant

CFO: William Petit

Medical Director: Sheila Thomas-McLeod

Dental Director: Haleemah B. Ahmad, DDS

Administrative/Main Site: Treasure Coast Community Health, Inc.

Address: 12196 County Road 512
Fellsmere, FL 32948

Phone: (772) 571-8828
Fax: (772) 571-1602

Hours of Operation:

Monday, Tues, Wed: 8:00 a.m. - 5:30 p.m.
Thursday: 9:30 a.m. - 7:00 p.m.
Friday: 8:00 a.m. - 5:00 p.m.

Services Provided:

Family Medicine, Internal medicine, Minor Emergencies, Hypertension, Diabetes, Lab, Formulary, EKG, Occupational Medicine (Workers Comp), Family Dental, Preventative and Restorative, Oral Surgery

Satellite Site: Treasure Coast Community Health, Inc.

Address: 777 37th Street, Suite D-103
Vero Beach, FL 32960

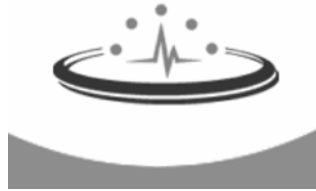
Phone: (772) 778-4780

Hours of Operation:

Monday, Wed, Thur: 8:00 a.m. - 5:30 p.m.
Tuesday: 9:30 a.m. - 7:00 p.m.
Friday: 8:00 a.m. - 5:00 p.m.

Services Provided:

Family Medicine, Internal medicine, Minor Emergencies, Hypertension, Diabetes, Lab, Formulary, EKG, Occupational Medicine (Workers Comp), Family Dental, Preventative and Restorative, Oral Surgery



Trenton Medical Center

CEO: DeWayne Yates

CMO: Bruce Thomas, MD

CFO: Anita Riels

Clinical Director: Cindy Hines

Pharmacy Director: Melissa Turley

Administrative/Main Site: Trenton Medical Center, Inc/ Trenton Pediatrics

Address: 911 South Main Street
Trenton, FL 32693

Phone: (352) 463-2374

Fax: (352) 463-2726

Hours of Operation:

Monday – Friday: 8:00 a.m. - 12:00 p.m.

Services Provided:

Complete Primary Care, Well Baby Exams, Minor Trauma, Case Management, Hearing and Vision Testing, Chronic Disease Management, Immunizations Minor Surgical Procedures, Family Planning, Physical Exams, Vaccines for Children, ADD & ADHD Evaluations, Health Screening, HIV Testing, Office Visits, Pharmacy, Chiropractic Care, Basic X-Rays, Basic Labs

Satellite Site: Bell Family Health Care/ Pharmacy

Address: 1830 North Main Street
Bell, FL 32619

Phone: (352) 463-1100

Hours of Operation:

Monday – Friday: 8:00 a.m. - 5:00 p.m.

Services Provided:

Complete Primary Care, Well Baby Exams, Minor Trauma, Case Management, Hearing and Vision Testing, Chronic Disease Management, Immunizations Minor Surgical Procedures, Family Planning, Physical Exams, Vaccines for Children, ADD & ADHD Evaluations, Health Screening, HIV Testing, Office Visits, Pharmacy, Chiropractic Care, Basic X-Rays, Basic Labs

Satellite Site: Branford Health Center

Address: 103 US 27 SW
Branford, FL 32008

Phone: (386) 935-3090

Hours of Operation:

Monday – Friday: 8:00 a.m. - 5:00 p.m.

Services Provided:

Complete Primary Care, Well Baby Exams, Minor Trauma, Case Management, Hearing and Vision Testing, Chronic Disease Management, Immunizations Minor Surgical Procedures, Family Planning, Physical Exams, Vaccines for Children, ADD & ADHD Evaluations, Health Screening, HIV Testing, Office Visits, Pharmacy, Chiropractic Care, Basic X-Rays, Basic Labs

FACHC ASSOCIATES

Community Health Centers Alliance

CEO: Diane Gaddis

Exec Asst: Deborah Mason

Administrative Office: Community Health Centers Alliance

Address: 801 94th Avenue North, Suite 201
St Petersburg, FL 33702

Phone: (727) 570-2255

Fax: (888) 255-0213

Website: www.chcalliance.org

Members of the CHC Alliance include: Bond CHC, Central Florida Family Health Care, Central Florida Health Care, Collier Health Services, Family Medical & Dental Centers, Florida Community Health Centers, Inc., Manatee County Rural Health Services, PanCare Community Health, Pierson Medical Center, Thomas E. Langley Medical Center & Trenton Medical Center.

Health Choice Network

President & CEO: Kevin Kearns

Executive Vice President – Programs and Fund Development: Terisa James

Senior Vice President – Clinical & Managed Care: Margarita Ollet

Senior Vice President – Chief Information Officer: Alex Romillo

Medical Director – St. Anthony Amofah, MD

Administrative Office: Health Choice Network

Address: 9064 NW 13th Terrace
Miami, FL 33172

Phone: (305) 591-4715

Fax: (352) 463-2726

Website: <http://www.hcnetwork.org>

Members of the Health Choice Network include: Borinquen Health Care Center, Broward Community & Family Health Center, Citrus Health Network, Community Health of South Florida, Community Health Centers of Pinellas, Economic Opportunity Family Health Center, Family Health Center of Southwest Florida, Health Care for the Homeless, Helen B. Bentley Family Health Center, Miami Beach CHC, Premier Community Health Care Group & Tampa CHC.



Florida Area Health Education Center

Program Offices:

- **Florida State University AHEC Program**

Program Director: Andrée Aubrey, L.C.S.W.
Florida State University College of Medicine
1115 West Call Street
Tallahassee, FL 32306-4300
Phone: (850) 644-3454 Fax: (850)645-2859
<http://www.med.fsu.edu>

- **University of Florida AHEC Program**

Program Director: Barbara Richardson, Ph.D., R.N.
University of Florida AHEC Program
2750 NW 43rd Street, Suite 102
Gainesville, Florida 32606-7486
Phone: (352) 392-0030 Fax: (352) 392-1022
<http://www.flahec.org/ahec/>

CENTERS:

Big Bend AHEC, Northeast Florida AHEC, Suwannee River AHEC, West Florida AHEC

- **University of Miami AHEC Program**

Program Director: Arthur M. Fournier, M.D.
Associate Dean for Community Health Affairs
University of Miami School of Medicine
P.O. Box 016700 (R-700)
Miami, Florida 33101
(305) 243-2847 Fax (305) 243-2888

1801 NW 9th Avenue (for FedEx mailings)
Highland Professional Building, Suite 470
Miami, Florida 33136

CENTERS:

Miami-Dade AHEC, Florida Keys AHEC

- **Nova Southeastern University AHEC Program**

Program Director: Steven B. Zucker, D.M.D., M.Ed.
Associate Dean for Community Affairs
Nova Southeastern University
College of Osteopathic Medicine
3200 South University Drive
Fort Lauderdale, Florida 33328
Phone: (954) 262-1588 Fax: (954) 262-3209
<http://medicine.nova.edu/academics/ahec.html>

CENTERS:

Central Florida AHEC, Everglades AHEC

- **University of South Florida AHEC Program**

Program Director: Cynthia S. Selleck, A.R.N.P., D.S.N.
University of South Florida
College of Medicine (AHEC), MDC 76
12901 Bruce B. Downs Boulevard
Tampa, Florida 33612-4799
Phone: (813) 974-3507 Fax: (813) 974-3605 SC-574-3507
<http://health.usf.edu/ahec>

CENTERS:

Gulfcoast North AHEC, Gulfcoast South AHEC

Satellite Sites:

- **BIG BEND AHEC**

Serving the counties of Bay, Calhoun, Franklin, Gadsden, Gulf, Holmes, Jackson, Jefferson, Leon, Liberty, Madison, Taylor, Washington, Wakulla

Director: Vacant
325 John Knox Road
Building M, Suite 200
Tallahassee, Florida 32303
Telephone: (850) 224-1177
Fax: (850) 224-8441
<http://BigBendAHEC.org/>

- **CENTRAL FLORIDA AHEC**

Serving the counties of Brevard, Hardee, Highlands, Lake, Orange, Osceola, Polk, Seminole, Sumter

Director: Blake Warren, M.H.S.A.
328 South Central Avenue
Apopka, Florida 32703
Telephone: (407) 889-2292
Fax: (407) 889-4124
<http://www.cfahec.org>

- **EVERGLADES AHEC**

Serving the counties of Broward, Collier, Glades, Hendry, Indian River, Lee, Martin, Okeechobee, Palm Beach, St. Lucie

Director: Joe Peters, B.S.
5725 Corporate Way, Suite 102
West Palm Beach, FL 33407
Telephone: (561) 640-3620; (800) 819-2357
Fax: (561) 681-9284

- **FLORIDA KEYS AHEC**

Serving Monroe County

Director: Michael Cunningham
5800 Overseas Highway Suite 38
Marathon, Florida 33050
Telephone: (305) 743-7111
Fax: (305) 743-7709
<http://www.FKAHEC.org>

- **GULFCOAST NORTH AHEC**

Serving the counties of Citrus, Hernando, Hillsborough, Pasco, Pinellas

Director: Jody Lazzara, M.S., L.M.H.C.

17819 State Route 52

Land O'Lakes, Florida 34638-6819

Telephone: (813) 929-1000

Fax: (813) 929-1009

SunCom Phone: 514-9775

<http://www.gnahec.org>

- **GULFCOAST SOUTH AHEC**

Serving the counties of Charlotte, Desoto, Manatee, Sarasota

Director: Edna Apostol, M.P.H.

2201 Cantu Court, Suite 117

Sarasota, Florida 34232

Telephone: (941) 361-6602; (800) 967-0807

Fax: (941) 361-6612

SunCom: 516-1885

<http://www.gsahec.org>

- **MIAMI-DADE AHEC**

Serving Miami-Dade County

Director: Martha Sanchez, R.N., B.S.N., M.B.A.

8600 N.W. 53rd Terrace, Suite 200

Miami, Florida 33166

Telephone: (305) 994-9268

Fax: (305) 592-3704

<http://www.mdahec.org>

- **NORTHEAST FLORIDA AHEC**

Serving the counties of Baker, Clay, Duval, Flagler, Nassau, St. Johns, Volusia

Director: Joe Crozier, M.S.
1107 Myra Street, Suite 250
Jacksonville, Florida 32204
Telephone: (904) 482-0189
Fax: (904) 482-0196
<http://www.nefahec.org/>

- **SUWANNEE RIVER AHEC**

Serving the counties of Alachua, Bradford, Columbia, Dixie, Gilchrist, Hamilton, Lafayette, Levy, Marion, Putnam, Suwannee, Union

Director: Marilyn Mesh, M.Ed., M.Ac.
P.O. Box 2157
Alachua, Florida 32616-2157
Physical Address:
16407 N.W. 174 Drive
Suite D
Alachua, FL 32615
Telephone: (386) 462-1551
Fax: (386) 462-1601
<http://www.srahec.org/>

- **WEST FLORIDA AHEC**

Serving the counties of Escambia, Okaloosa, Santa Rosa, Walton

Director: Paige Collier, M.S.
1455 South Ferdon Blvd., Suite B-1
Crestview, Florida 32536
Telephone: (850) 682-2552
Fax: (850) 682-2521