

HRSA Definition of Agriculture

Farming in All of Its Branches Including:

- A) Cultivation and tilling of the soil

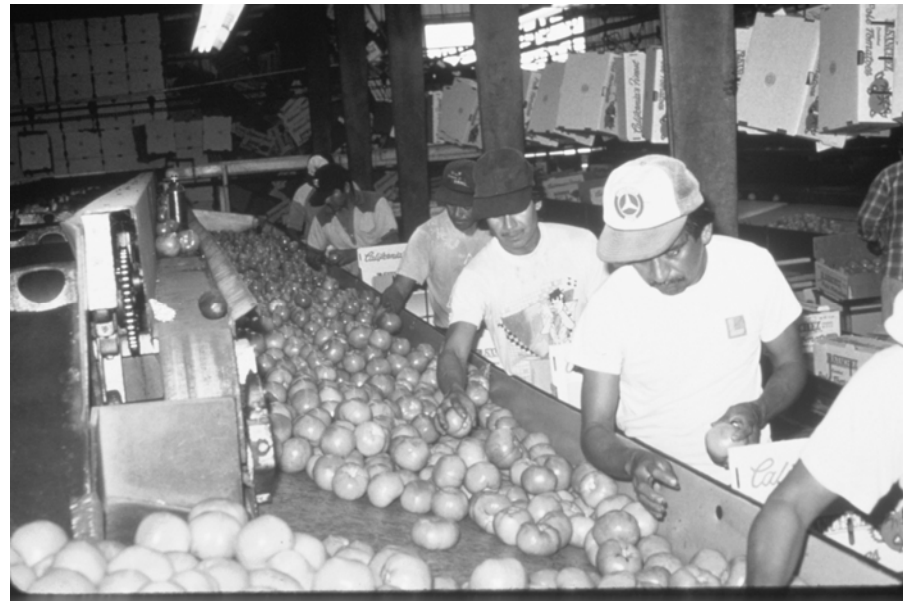
- B) Production, cultivation, growing & harvesting of any commodity grown on, in or as adjunct to or part of a commodity grown in or on the land

- C) Any practice including:
 - Preparation & processing for market
 - P&P for delivery or storage, to market, to carriers for transportation to market

Farmwork Descriptions & Exclusions

Includes

- Most fruits & vegetables
- Includes: hops, tobacco, cotton
- Nursery stock
- Processing canneries on or next to farms



Excludes

- Fisheries
- Poultry and Meat processing
- Canneries off the farm
- Processing plants operating off the farm



Agricultural (Farm) Worker is an individual and their dependants:

- Whose principal employment is in agriculture (at least 51% of income derived from agricultural employment)
- Who has been so employed within 24 months or before retirement or disability.

Migrant Vs. Seasonal Farmworkers

Migrant

Established a temporary abode (home) for the purposes of such employment

Seasonal

Is not migratory and does not need to establish a temporary abode for purposes of such employment